

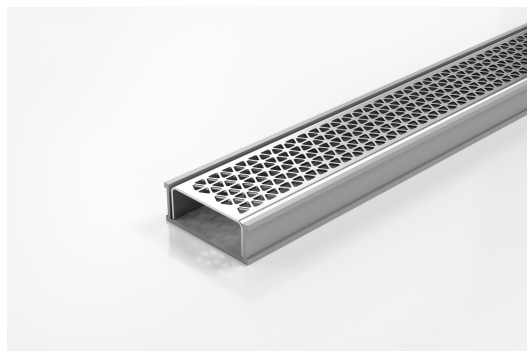


ARCHITECTURAL
GRATES + DRAINS



65MNDG25

Linear Drain



Code 65MNDG25

Range 65

Grate Style MND

Category Modular Kits

Channel Material uPVC

Steel Grade 316



Grates longer than 1500mm supplied in sections. Tile Inserts longer than 1200mm supplied in sections. Channels over 3000mm supplied in sections with joiner. +/-2mm tolerance on dimensions.

Modular drainage kit with stainless steel grate, uPVC drainage channel and fittings

The 65MND25 is a designer grate featuring a tessellated hexagonal design created by Marc Newson.

The grate(s) are manufactured from 316 marine grade stainless steel and the channel and fittings from uPVC.

Kits longer than 3000mm are available on request.

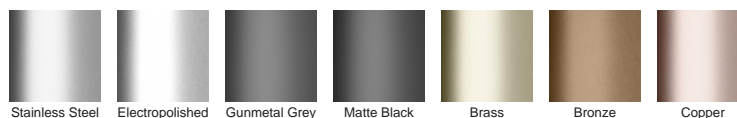
Please be aware that depending on the installation environment, for a pool installation or close to a surf beach, you may need to have your stainless steel grates electropolished.

Refer to AS3500 for outlet pipe sizes specific to your installation.

SPECIFICATIONS + DIMENSIONS

Channel Width	74mm			
Channel Depth	27mm			
Length(s)	900mm	1000mm	1200mm	1500mm
	1800mm	1900mm	2000mm	2100mm
	2200mm	2400mm	2500mm	2700mm
	3000mm			
Outlet Size	DN40, DN50			

STORMTECH COLOUR FINISHES



Electroplate finishes subject to natural variation with time and local environment. Factors such as pools/surf beaches may require electropolishing. Contact us for suitability.

PRODUCT APPLICATIONS

Bathroom Drainage
Aged / Health Care Drainage
Balcony Drainage
Courtyard / Patio Drainage
Pool and Spa Area Drainage
Hospitality Drainage

Paved Area Drainage
Shower Drainage
Multi-Residential Drainage
Special Needs Drainage
Threshold Drainage
Suspended Slab Drainage



Copyright © Stormtech Pty Ltd. Patent 733361. Drawings not to scale, please use dimensions shown.
Downloaded 08/05/2024 (please check for updates)

Visit **stormtech.com.au**
for tools + inspiration.

Phone **1300 653 403**

Email **info@stormtech.com.au**