

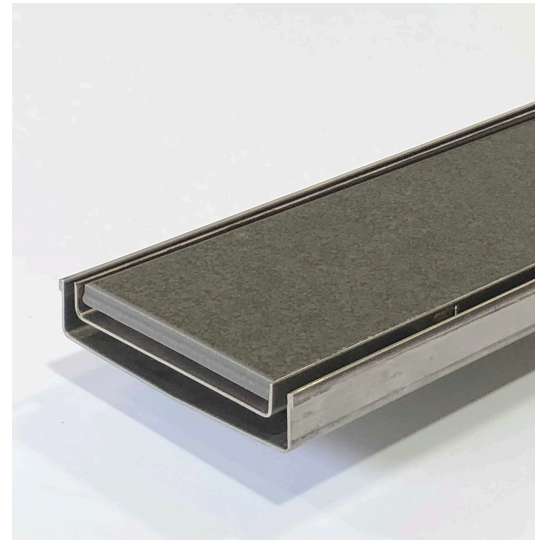
100Tii20 Drainage System

Product Description

The 100Tii20 is a standard Tile Insert drain designed to blend seamlessly with tiled floors. It is suitable for tiles up to 10mm thick.

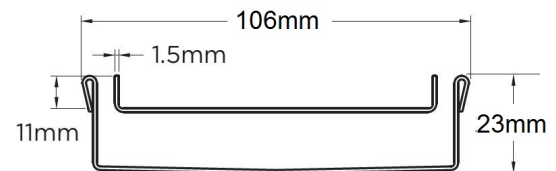
The 100Tii20 is a modular drainage kit with stainless steel tray insert, stainless steel drainage channel and fittings. It is size adjustable and will be assembled at the time of installation.

The tile insert is manufactured from 316 marine grade stainless steel.



Applications

- Balcony
- Bathroom
- Courtyard
- Paved Area
- Pool Area
- Shower
- Special needs
- Threshold drainage
- Wet Area Drainage



Specifications

	Width	Depth	Length	Outlet size
Completed Unit	106mm	23mm	As required	DN50 DN80

