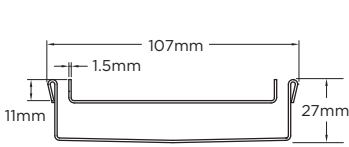




# Standard Tile Insert Drain

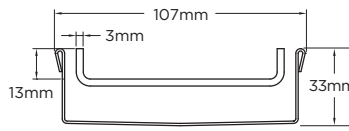
Made-to-Length Order/Quote Form

## Tray Profiles 100 Range



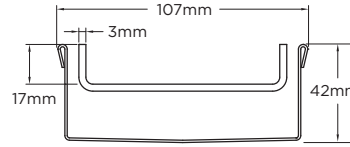
**Profile 1**

Suits tiles up to 10mm thick  
100TRTi25MTL



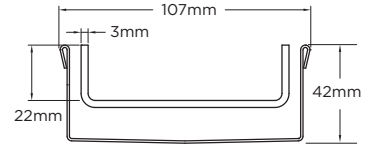
**Profile 2**

Suits tiles up to 12mm thick  
100Ti30MTL



**Profile 3**

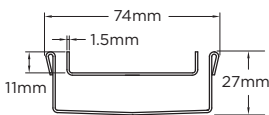
Suits tiles up to 16mm thick  
100Ti40MTL



**Profile 4**

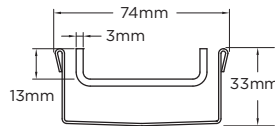
Suits tiles up to 20mm thick  
100Ti40-22MTL

## 65 Range



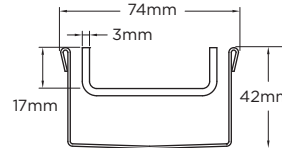
**Profile 5**

Suits tiles up to 10mm thick  
65TRTi25MTL



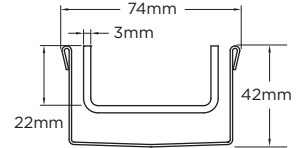
**Profile 6**

Suits tiles up to 12mm thick  
65Ti30MTL



**Profile 7**

Suits tiles up to 16mm thick  
65Ti40MTL

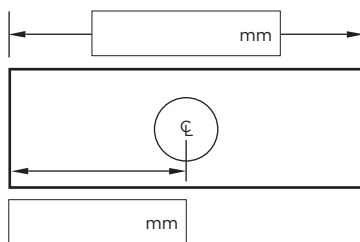


**Profile 8**

Suits tiles up to 20mm thick  
65Ti40-22MTL

## Specify Size, Outlet and Profile Required

### Drain 1



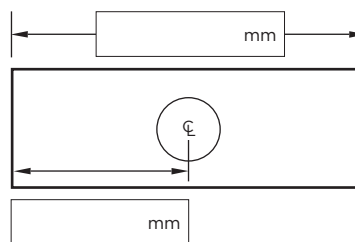
#### Profile Required

- 1    2    3    4  
 5    6    7    8

#### Outlet Size

- 38mm    44mm    51mm  
 63mm    76mm    89mm

### Drain 2



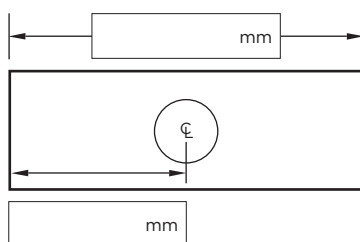
#### Profile Required

- 1    2    3    4  
 5    6    7    8

#### Outlet Size

- 38mm    44mm    51mm  
 63mm    76mm    89mm

### Drain 3



#### Profile Required

- 1    2    3    4  
 5    6    7    8

#### Outlet Size

- 38mm    44mm    51mm  
 63mm    76mm    89mm

### Please Note

See AS3500 standard & local regulator for specific outlet/drain requirements. Outlet Size must be smaller than selected Range. Marc Newson (MND) grate style not available with Profiles 2 or 4. Stainless Steel Grade is 316 unless specified. Fast 3 day dispatch is for single outlet drains, no longer than 3000mm. Fast 5 day dispatch for drains with multiple outlets or over 3000mm. Lengths under 750mm charged at 0.75m rate. Orders received after 11am are processed as next working day.

### Full Name

### Company Name

### Telephone

### Email Address

### Order Number

### Stormtech Quote Number

### Signature