

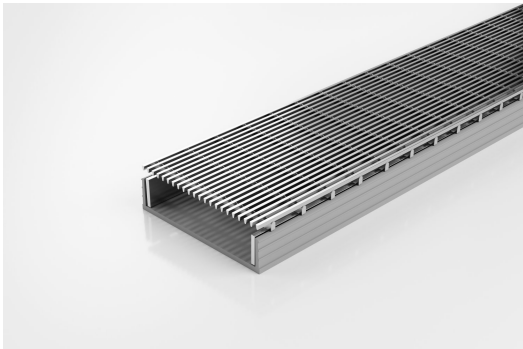


ARCHITECTURAL
GRATES + DRAINS



100ARG30

Linear Drainage System



Modular site finish system, wedge wire grate, manufactured from 316 grade stainless steel combined with a UPVC channel.

The 100AR is the original premium architectural grate featuring a 2mm wire/2.5mm gap.

Kits longer than 3000mm are available on request.

Please be aware that depending on the installation environment, for a pool installation or close to a surf beach, you may need to have your stainless steel grates electropolished.

Code 100ARG30

Range 100

Grate Style AR

Category Modular Kits

Channel Material uPVC

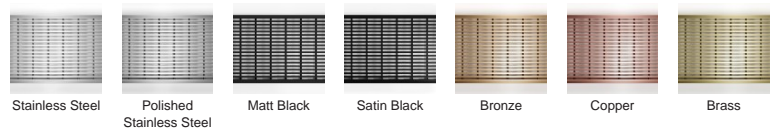
Steel Grade 316

SPECIFICATIONS + DIMENSIONS

Channel Width	106mm				
Channel Depth	32mm				
Length(s)	900mm	1000mm	1200mm	1500mm	1800mm
	1900mm	2000mm	2200mm	2400mm	2700mm
	3000mm				
Outlet Size	DN40, DN50, DN80, DN100				



STORMTECH COLOUR FINISHES



PRODUCT APPLICATIONS

- | | |
|-----------------------------|----------------------------|
| Bathroom Drainage | Hospitality Drainage |
| Aged / Health Care Drainage | Paved Area Drainage |
| Balcony Drainage | Shower Drainage |
| Commercial Drainage | Multi-Residential Drainage |
| Courtyard / Patio Drainage | Special Needs Drainage |
| Pool and Spa Area Drainage | Threshold Drainage |

Copyright © Stormtech Pty Ltd. Patent 733361. Drawings not to scale, please use dimensions shown.



Visit stormtech.com.au
for tools + inspiration.

Phone **1300 653 403**

Email info@stormtech.com.au