

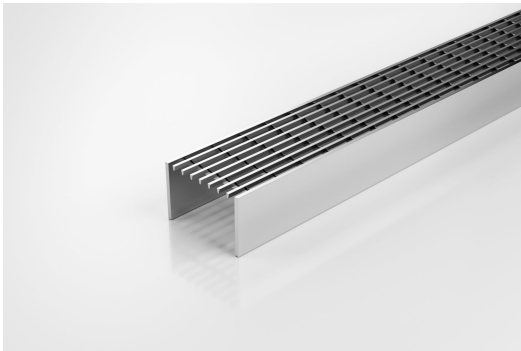


ARCHITECTURAL
GRATES + DRAINS



65TR40 for 65G100 and 65G90

Linear Drainage System



The 65TR40 is our standard grate designed to be used with our Special Assembly units 65G100 and 65G90.

65mm wide UPVC channel is connected via downpipes at 200mm intervals to sockets in a 100mm drain below. This allows the channel to be installed level while the drainpipe is given sufficient fall to be self-cleaning.

Code 65TR40 for 65G100 and 65G90

Range Special Assembly

Grate Style TR

Category Components

Channel Material Stainless Steel

Steel Grade 316

Please note that our TR grates have a non finished finish.

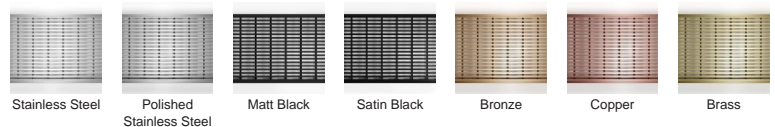
Please be aware that depending on the installation environment, for a pool installation or close to a surf beach, you may need to have your stainless steel grates electropolished.

This unique drainage system was recognised for its innovation by a DesignMark at the Australian International Design Awards.

SPECIFICATIONS + DIMENSIONS

Channel Width	65mm
Channel Depth	40mm
Length(s)	900mm 1000mm 1200mm 1500mm
Outlet Size	N/A

STORMTECH COLOUR FINISHES



PRODUCT APPLICATIONS

Balcony Drainage
Courtyard / Patio Drainage
Pool and Spa Area Drainage
Hospitality Drainage
Paved Area Drainage
Special Needs Drainage

Threshold Drainage
Suspended Slab Drainage



Copyright © Stormtech Pty Ltd. Patent 733361. Drawings not to scale, please use dimensions shown.

Visit stormtech.com.au
for tools + inspiration.

Phone **1300 653 403**

Email info@stormtech.com.au