

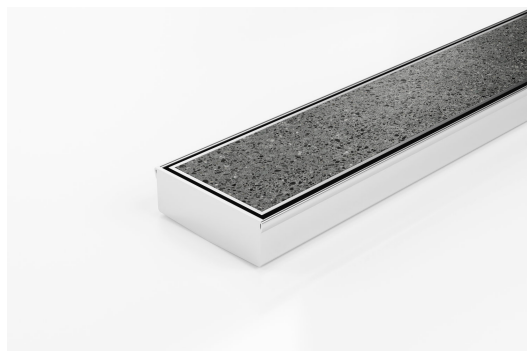


ARCHITECTURAL
GRATES + DRAINS



90Ti30MTL

Tile Insert Drain



KADO Lux Tile Insert Made to length drainage unit.

Made from 316 marine grade stainless steel, the Kado Lux Tile Insert MTL is made to specific lengths with a customized outlet position along the drain.

Suitable for indoor and outdoor applications.

Code 90Ti30MTL

Range KADO

Grate Style KADO Lux Tile Insert

Category Made-to-Length

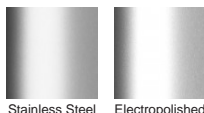
Channel Material Stainless Steel

Steel Grade 316

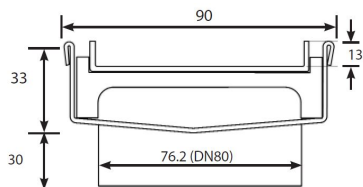
SPECIFICATIONS + DIMENSIONS

Channel Width	90mm
Channel Depth	33mm
Length(s)	As Required
Outlet Size	DN80

STORMTECH COLOUR FINISHES



Electroplate finishes subject to natural variation with time and local environment. Factors such as pools/surf beaches may require electropolishing. Contact us for suitability.



Grates longer than 1500mm supplied in sections. Tile Inserts longer than 1200mm supplied in sections. Channels over 3000mm supplied in sections with joiner. +/-2mm tolerance on dimensions.

PRODUCT APPLICATIONS

Bathroom Drainage
Aged / Health Care Drainage
Balcony Drainage
Commercial Drainage
Courtyard / Patio Drainage
Pool and Spa Area Drainage

Hospitality Drainage
Shower Drainage
Multi-Residential Drainage
Special Needs Drainage
Threshold Drainage
Suspended Slab Drainage

Copyright © Stormtech Pty Ltd. Patent 733361. Drawings not to scale, please use dimensions shown.
Downloaded 17/07/2025 (please check for updates)



Visit **stormtech.com.au**
for tools + inspiration.

Phone **1300 653 403**

Email **info@stormtech.com.au**