

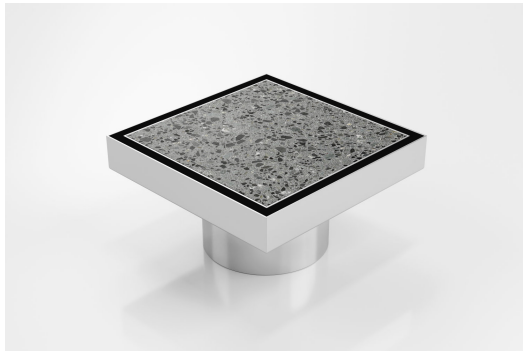


ARCHITECTURAL
GRATES + DRAINS



SQ100Ti20-100

Tile Insert Drain



Code SQ100Ti20-100

Range Square

Grate Style Ti

Category Fixed-Length Units

Channel Material Stainless Steel

Steel Grade 316

Square Floor waste with Tile Insert

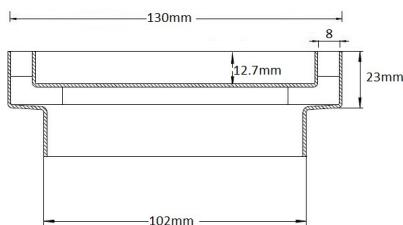
The SQ100Ti is a standard floor waste drain.

The SQ Range of floor waste units allow the integration of a standard floor waste with Stormtech linear drainage.

Tile Insert Floor waste measures 130mm x 130mm.

It is suitable for tiles up to 12mm thick.

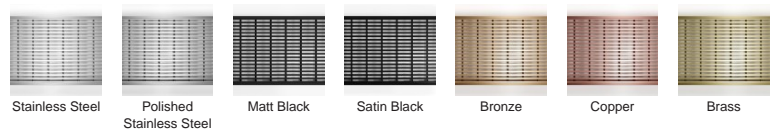
Available with 101mm outlet



SPECIFICATIONS + DIMENSIONS

Channel Width	130mm
Channel Depth	23mm
Length(s)	130mm
Outlet Size	DN100

STORMTECH COLOUR FINISHES



PRODUCT APPLICATIONS

Bathroom Drainage
Balcony Drainage
Commercial Drainage
Courtyard / Patio Drainage
Paved Area Drainage
Shower Drainage

Multi-Residential Drainage
Wet Area Drainage

Copyright © Stormtech Pty Ltd. Patent 733361. Drawings not to scale, please use dimensions shown.



Visit stormtech.com.au
for tools + inspiration.

Phone **1300 653 403**

Email info@stormtech.com.au