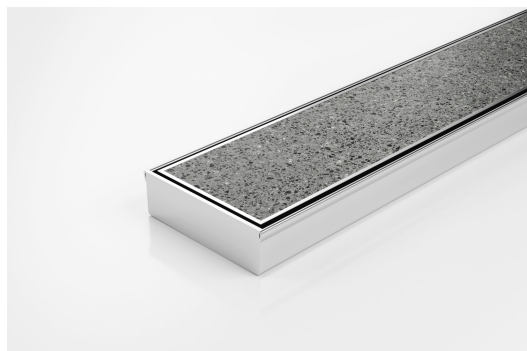


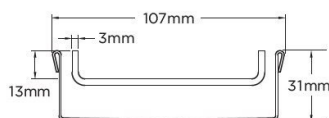


# 100TiCO30

## Tile Insert Drain



## Steel Grade 316



### Full stainless steel Tile Insert drain with centre outlet

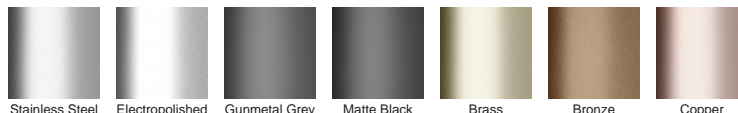
The 100TiCO30 is a fully finished ready to install all stainless steel unit featuring a Tile Insert Frame and drainage channel manufactured from 3mm thick 316 marine grade stainless steel.

Suitable for tiles up to 12mm thick.

## SPECIFICATIONS + DIMENSIONS

Channel Width	107mm		
Channel Depth	31mm		
Length(s)	900mm	1000mm	1200mm
Outlet Size	DN80		

## STORMTECH COLOUR FINISHES



**Electroplate finishes subject to natural variation with time and local environment. Factors such as pools/surf beaches may require electropolishing. Contact us for suitability.**

## PRODUCT APPLICATIONS

Bathroom Drainage  
Aged / Health Care Drainage  
Balcony Drainage  
Commercial Drainage  
Pool and Spa Area Drainage  
Hospitality Drainage

Shower Drainage  
Multi-Residential Drainage  
Special Needs Drainage  
Threshold Drainage  
Suspended Slab Drainage  
Wet Area Drainage

Copyright © Stormtech Pty Ltd. Patent 733361. Drawings not to scale, please use dimensions shown.  
Downloaded 19/02/2026 (please check for updates)



Visit **stormtech.com.au**  
for tools + inspiration.

Phone **1300 653 403**

Email **info@stormtech.com.au**