

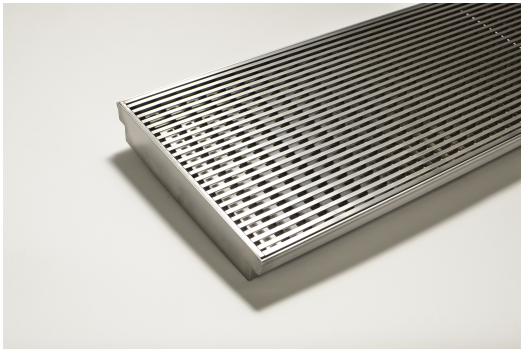


ARCHITECTURAL  
GRATES + DRAINS



# 275Custom-316-A

## Linear Drain



316 stainless steel 275mm wide grate and custom channel depth.

Depth between 27mm and 250mm.

Available with a 5mm wire x 5mm gap and 5mm wire x 5mm gap Grate Grip slip resistant dimple finish

Suits Load Class A.

For site specific needs or unusual situations, choose from our Custom Fabrication range.

Stormtech can customise any drainage requirements to achieve maximum efficiency

**Code** 275Custom-316-A

**Range** Custom Fabrication

**Grate Style** CR

**Category** Custom Made

**Channel Material** Stainless Steel

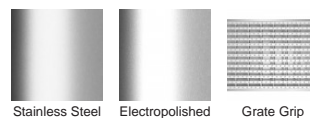
**Steel Grade** 316

Grates longer than 1500mm supplied in sections. Tile Inserts longer than 1200mm supplied in sections. Channels over 3000mm supplied in sections with joiner. +/-2mm tolerance on dimensions.

### SPECIFICATIONS + DIMENSIONS

<b>Channel Width</b>	285mm
<b>Channel Depth</b>	27mm - 285mm
<b>Length(s)</b>	As Required
<b>Outlet Size</b>	DN40, DN50, DN65, DN80, DN100

### STORMTECH COLOUR FINISHES



Electroplate finishes subject to natural variation with time and local environment. Factors such as pools/surf beaches may require electropolishing. Contact us for suitability.

### PRODUCT APPLICATIONS

- |                             |                            |
|-----------------------------|----------------------------|
| Bathroom Drainage           | Pool and Spa Area Drainage |
| Aged / Health Care Drainage | Hospitality Drainage       |
| Balcony Drainage            | Paved Area Drainage        |
| Commercial Drainage         | Shower Drainage            |
| Courtyard / Patio Drainage  | Multi-Residential Drainage |
| Driveway Drainage           | Special Needs Drainage     |

Copyright © Stormtech Pty Ltd. Patent 733361. Drawings not to scale, please use dimensions shown. Downloaded 02/02/2025 (please check for updates)



Visit [stormtech.com.au](http://stormtech.com.au)  
for tools + inspiration.

Phone **1300 653 403**

Email [info@stormtech.com.au](mailto:info@stormtech.com.au)