

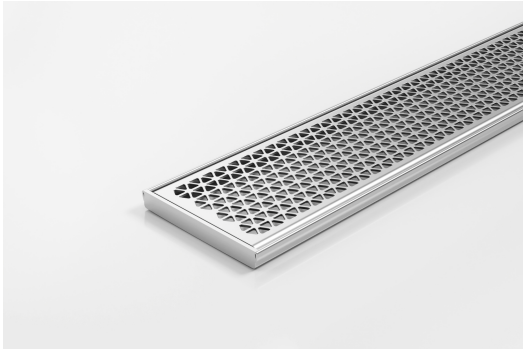


ARCHITECTURAL  
GRATES + DRAINS



# 100MNDi12MTL

## Linear Drain



All stainless steel drainage unit made to specified length with specified outlet position.

This is the shallowest channel available in the Stormtech product range. The low profile at just 16mm is perfect for renovators as it requires no serious structural channels allowing the channel to fit easily within the tiling bed.

100MND is a punched grate designed by Marc Newson.

**Code** 100MNDi12MTL

**Range** 100

**Grate Style** MND

**Category** Made-to-Length

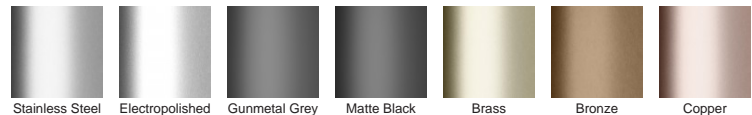
**Channel Material** Stainless Steel

**Steel Grade** 316

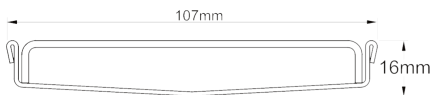
### SPECIFICATIONS + DIMENSIONS

|                      |                               |
|----------------------|-------------------------------|
| <b>Channel Width</b> | 107mm                         |
| <b>Channel Depth</b> | 16mm                          |
| <b>Length(s)</b>     | As Required                   |
| <b>Outlet Size</b>   | DN40, DN50, DN65, DN80, DN100 |

### STORMTECH COLOUR FINISHES



Electroplate finishes subject to natural variation with time and local environment. Factors such as pools/surf beaches may require electropolishing. Contact us for suitability.



Grates longer than 1500mm supplied in sections. Tile Inserts longer than 1200mm supplied in sections. Channels over 3000mm supplied in sections with joiner. +/-2mm tolerance on dimensions.

### PRODUCT APPLICATIONS

|                             |                            |
|-----------------------------|----------------------------|
| Bathroom Drainage           | Hospitality Drainage       |
| Aged / Health Care Drainage | Paved Area Drainage        |
| Balcony Drainage            | Shower Drainage            |
| Commercial Drainage         | Multi-Residential Drainage |
| Courtyard / Patio Drainage  | Special Needs Drainage     |
| Pool and Spa Area Drainage  | Threshold Drainage         |

Copyright © Stormtech Pty Ltd. Patent 733361. Drawings not to scale, please use dimensions shown. Downloaded 17/07/2024 (please check for updates)



Visit [stormtech.com.au](http://stormtech.com.au)  
for tools + inspiration.

Phone **1300 653 403**

Email [info@stormtech.com.au](mailto:info@stormtech.com.au)