



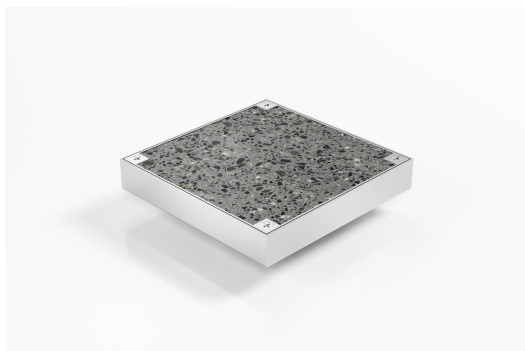
ARCHITECTURAL  
GRATES + DRAINS



# SQ100TiCL20DN80

## Clean Out

### Square Floor Waste



**Code** SQ100TiCL20DN80 Clean Out

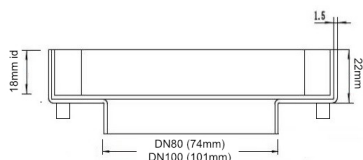
**Range** Square

**Grate Style** Ti

**Category** Square Floor Waste

**Channel Material** Stainless Steel

**Steel Grade** 316



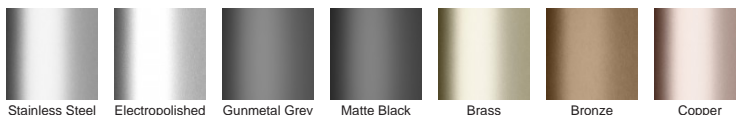
Grates longer than 1500mm supplied in sections. Tile Inserts longer than 1200mm supplied in sections. Channels over 3000mm supplied in sections with joiner. +/-2mm tolerance on dimensions.

- Clean Out inspection points are the ideal solution where access to the drainage line is required
- The clear-out inspection point can be infilled with a solid tile giving an extra special effect.
- Manufactured in grade 316 stainless steel with a satin finish.
- Suitable for tiles up to 17mm thick.
- 4 screws to secure the tile insert to the channel with a square rubber pad added between the insert and the channel

#### SPECIFICATIONS + DIMENSIONS

Channel Width	130mm
Channel Depth	22mm
Length(s)	130mm
Outlet Size	DN80

#### STORMTECH COLOUR FINISHES



Electroplate finishes subject to natural variation with time and local environment. Factors such as pools/surf beaches may require electropolishing. Contact us for suitability.

#### PRODUCT APPLICATIONS

Bathroom Drainage

Copyright © Stormtech Pty Ltd. Patent 733361. Drawings not to scale, please use dimensions shown.  
Downloaded 10/02/2026 (please check for updates)



Visit **stormtech.com.au**  
for tools + inspiration.

Phone **1300 653 403**

Email **info@stormtech.com.au**