

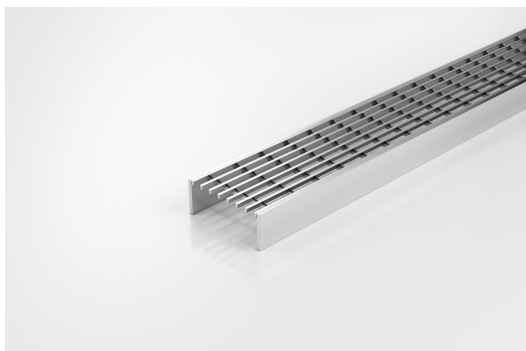


ARCHITECTURAL  
GRATES + DRAINS



# 65TR25

## Linear Drain



**Code** 65TR25

**Range** Special Assembly

**Grate Style** TR

**Category** Components

**Channel Material** Stainless Steel

**Steel Grade** 316

Grates longer than 1500mm supplied in sections. Tile Inserts longer than 1200mm supplied in sections. Channels over 3000mm supplied in sections with joiner. +/-2mm tolerance on dimensions.

The 65TR25 is our standard grate designed to be used with our Special Assembly units 65G100 and 65G90.

65mm wide UPVC channel is connected via downpipes at 200mm intervals to sockets in a 100mm drain below. This allows the channel to be installed level while the drainpipe is given sufficient fall to be self-cleaning.

Please note that our TR grates have a non finished finish.

Please be aware that depending on the installation environment, for a pool installation or close to a surf beach, you may need to have your stainless steel grates electropolished.

This unique drainage system was recognised for its innovation by a DesignMark at the Australian International Design Awards.

### SPECIFICATIONS + DIMENSIONS

<b>Channel Width</b>	65mm			
<b>Channel Depth</b>	25mm			
<b>Length(s)</b>	900mm	1000mm	1200mm	1500mm
<b>Outlet Size</b>	N/A			

### STORMTECH COLOUR FINISHES



Electroplate finishes subject to natural variation with time and local environment. Factors such as pools/surf beaches may require electropolishing. Contact us for suitability.

### PRODUCT APPLICATIONS

Balcony Drainage	Threshold Drainage
Courtyard / Patio Drainage	Suspended Slab Drainage
Pool and Spa Area Drainage	
Hospitality Drainage	
Paved Area Drainage	
Special Needs Drainage	



Copyright © Stormtech Pty Ltd. Patent 733361. Drawings not to scale, please use dimensions shown.  
Downloaded 15/09/2025 (please check for updates)

Visit **stormtech.com.au**  
for tools + inspiration.

Phone **1300 653 403**

Email **info@stormtech.com.au**