

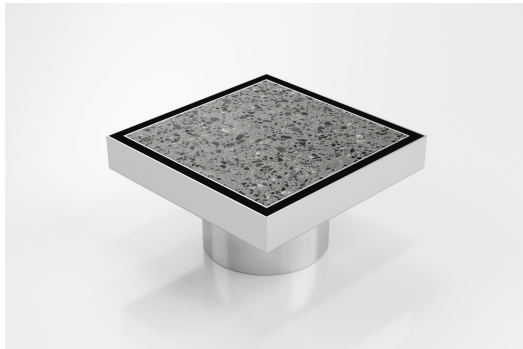


ARCHITECTURAL
GRATES + DRAINS



SQ100Ti20-80

Tile Insert Drain



Code SQ100Ti20-80

Range Square

Grate Style Ti

Category Fixed-Length Units

Channel Material Stainless Steel

Steel Grade 316

Square Floor waste with Tile Insert

The SQ100Ti is a standard floor waste drain.

The SQ Range of floor waste units allow the integration of a standard floor waste with Stormtech linear drainage.

Tile Insert Floor waste measures 130mm x 130mm.

It is suitable for tiles up to 12mm thick.

SPECIFICATIONS + DIMENSIONS

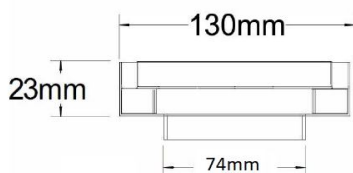
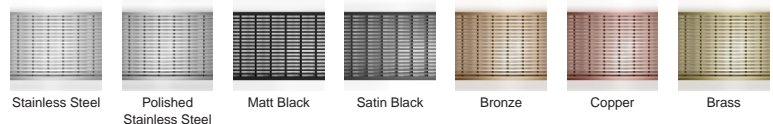
Channel Width 130mm - 130mm

Channel Depth 23mm

Length(s) 130mm

Outlet Size DN80

STORMTECH COLOUR FINISHES



PRODUCT APPLICATIONS

Bathroom Drainage

Balcony Drainage

Commercial Drainage

Courtyard / Patio Drainage

Driveway Drainage

Pool and Spa Area Drainage

Paved Area Drainage

Shower Drainage

Special Needs Drainage

Threshold Drainage

Suspended Slab Drainage

Wet Area Drainage

Copyright © Stormtech Pty Ltd. Patent 733361. Drawings not to scale, please use dimensions shown.



Visit stormtech.com.au
for tools + inspiration.

Phone **1300 653 403**

Email info@stormtech.com.au