

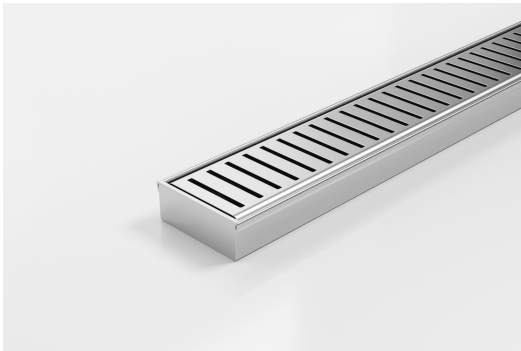


ARCHITECTURAL  
GRATES + DRAINS



# 65PPSi25MTL

## Linear Drainage System



All stainless steel drainage unit made to specified length with specified outlet position. New Punched Perpendicular Slot Grate

The 65PPS25 is a Punched Perpendicular Slot grate design.

Manufactured from 316 marine grade the 65PPS25 is 65mm wide and 25mm deep.

Refer to AS3500 for outlet pipe sizes specific to your installation.

**Code** 65PPSi25MTL

**Range** 65

**Grate Style** PPS

**Category** Made-to-Length

**Channel Material** Stainless Steel

**Steel Grade** 316

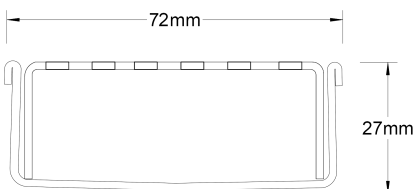
### SPECIFICATIONS + DIMENSIONS

<b>Channel Width</b>	72mm
<b>Channel Depth</b>	27mm
<b>Length(s)</b>	As Required
<b>Outlet Size</b>	DN40, DN50, DN65

### STORMTECH COLOUR FINISHES



Stainless Steel Polished Stainless Steel Matt Black Satin Black Bronze Copper Brass



### PRODUCT APPLICATIONS

Bathroom Drainage	Hospitality Drainage
Aged / Health Care Drainage	Paved Area Drainage
Balcony Drainage	Shower Drainage
Commercial Drainage	Multi-Residential Drainage
Courtyard / Patio Drainage	Special Needs Drainage
Pool and Spa Area Drainage	Threshold Drainage

Copyright © Stormtech Pty Ltd. Patent 733361. Drawings not to scale, please use dimensions shown.



Visit [stormtech.com.au](http://stormtech.com.au)  
for tools + inspiration.

Phone **1300 653 403**

Email [info@stormtech.com.au](mailto:info@stormtech.com.au)