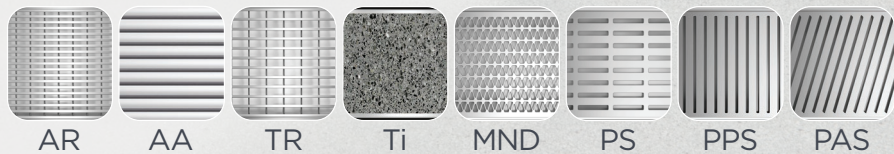


# THRESHOLD DRAINAGE

LINEAR DRAINAGE



- + Compatible with major door manufacturers.
- + Zero Threshold - seamless continuity between indoor and outdoor areas.
- + Suitable for door track only, door track with sub-sill and bi-fold/top hung door applications.



AR

AA

TR

Ti

MND

PS

PPS

PAS

**Stormtech**®



Choose your  
design + finish



# THRESHOLD DRAINAGE

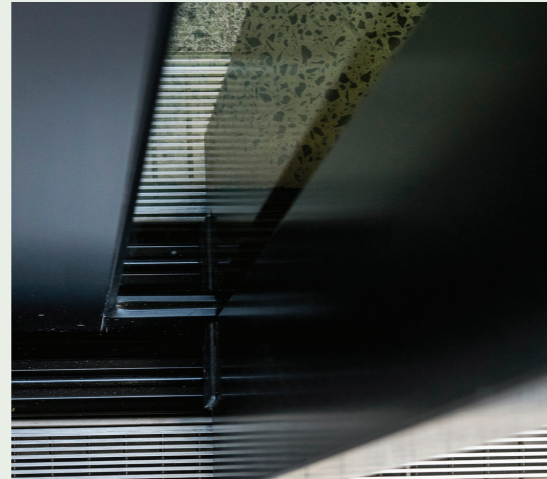


Linear stainless steel drainage with concealed channel for elegant integration into sliding, bi-fold and hinged door applications.

Available in 65 and 100 Ranges or Custom Accessibility Code Compliant.

## SLIDING + HINGED DOORS

Door Track with Sub-Sill Tray



## SLIDING + HINGED DOORS

Door Track Only Applications



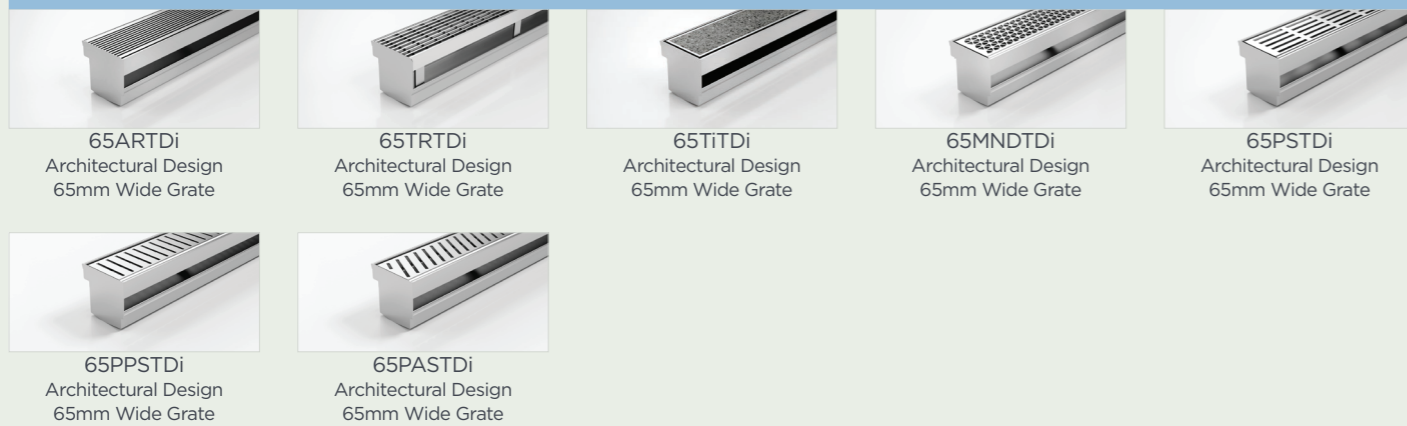
### 100 RANGE SLIDING + HINGED DOORS WITH DOOR TRACK AND SUB SILL TRAY



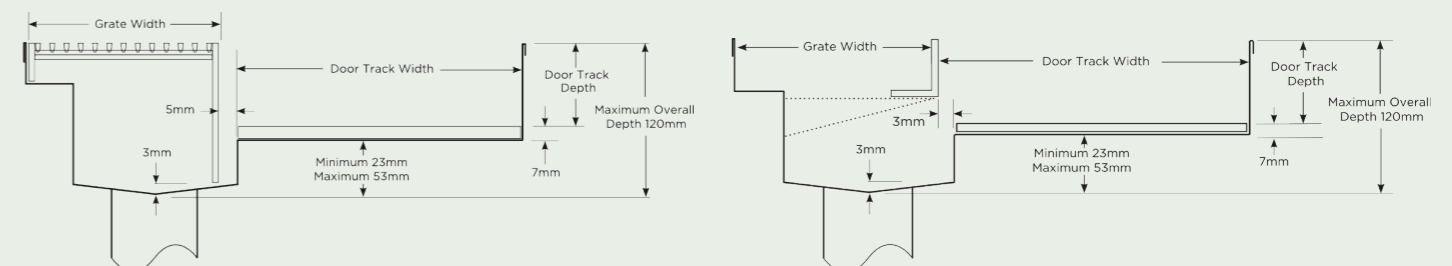
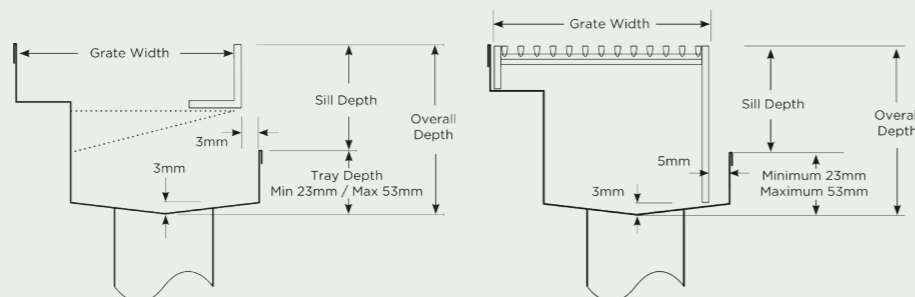
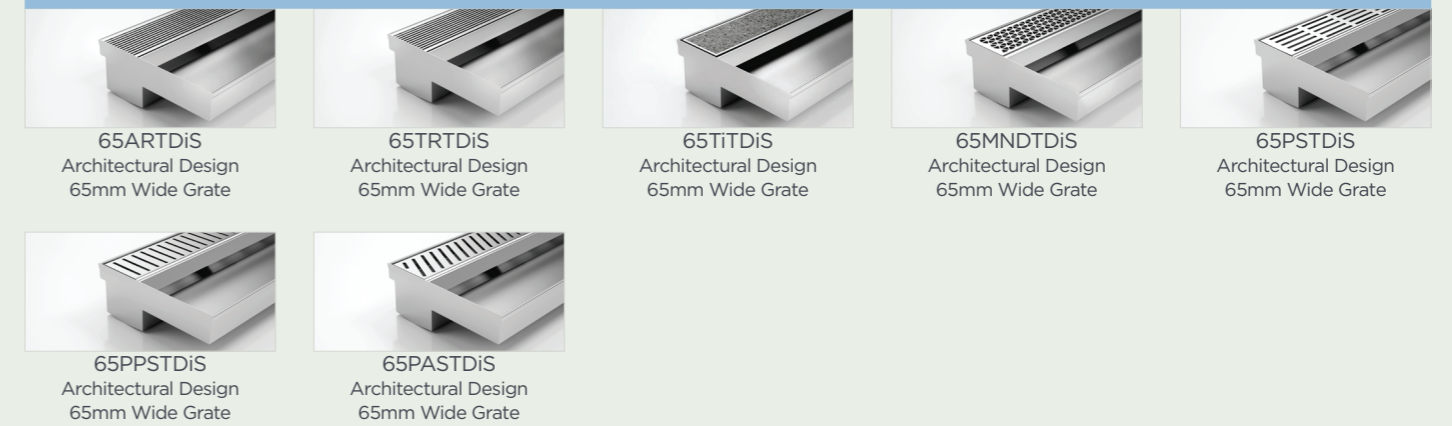
### DOOR TRACK ONLY APPLICATIONS - 100 RANGE



### 65 RANGE DOOR TRACK AND SUB SILL TRAY



### DOOR TRACK ONLY APPLICATION THRESHOLD WITH SILL - 65 RANGE



## FINISHES + COLOURS



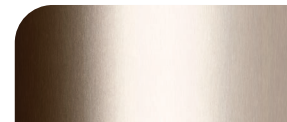
STAINLESS STEEL  
| ALUMINIUM



BLACK



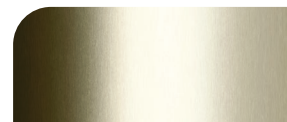
GUNMETAL GREY



BRONZE



COPPER



BRASS



BRASS GOLD  
Only available on  
Wave Grate



SCAN ME

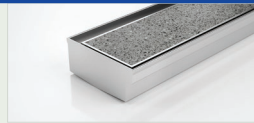
## BI-FOLD + TOP HUNG DOORS



100ARTDiBF  
Architectural Design  
100mm Wide Grate



100TRTDiBF  
Architectural Design  
100mm Wide Grate



100TiTDiBF  
Architectural Design  
100mm Wide Grate



100MNDTDiBF  
Architectural Design  
100mm Wide Grate



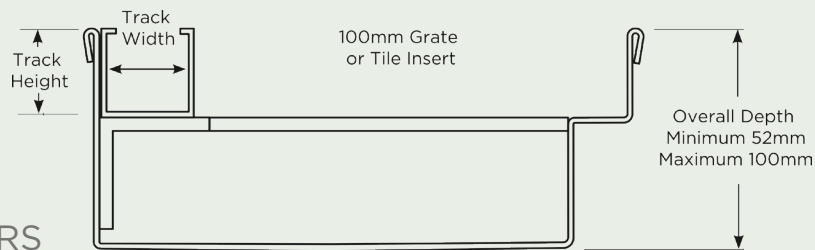
100PSTDiBF  
Architectural Design  
100mm Wide Grate



100PPSTDiBF  
Architectural Design  
100mm Wide Grate



100PASTDiBF  
Architectural Design  
100mm Wide Grate



## BI-FOLD + TOP HUNG DOORS



Visit [stormtech.com.au](http://stormtech.com.au) or scan QR code for detailed assembly and installation information.



### DISTRIBUTORS & STOCKISTS

+ To find a distributor near you, please visit our website or call our office.

### TECHNICAL INFORMATION

+ We provide product information & CAD files for download from our website.

MARINE CODE  
**316**  
STAINLESS  
STEEL

Stormtech Pty Ltd 22 Norfolk Avenue, South Nowra, NSW 2541 Australia | Phone 1300 653 403 | Email [info@stormtech.com.au](mailto:info@stormtech.com.au)

