



Stormtech™

# Grate Insights

Issue 7, 2025

Brought to you by Stormtech



# Grate Insights – Welcome

**A**s we move into a new year at Stormtech, I'm filled with an immense sense of pride and optimism. It's truly remarkable to witness our journey from strength to strength, and the outlook for the coming year is as positive as it gets.

Despite the challenges that every business faces, our mission remains firmly on track: to remain the #1 supplier of Australian-designed and made drainage solutions. The exceptional people of Stormtech have consistently risen to the occasion, quietly exceeding expectations in quality, sustainability, and service. They are the driving force behind our success, and I am incredibly grateful for their dedication and hard work.

The year ahead looks bright for the Australian construction industry, with a growing emphasis on quality and inclusivity. This focus aligns perfectly with Stormtech's values, and we're ready to seize the opportunities it presents. We're committed to expanding on our strong foundation by continually enhancing our capability, capacity, and sustainability.

Speaking of sustainability, I'm thrilled to share some significant achievements from the past year. We waved goodbye to the grid and became completely energy independent! We also received the prestigious Excellence in Product Stewardship Award and achieved a certified Level A GreenRate. Stormtech is proud to be the only drainage manufacturer to

reach these impressive heights of environmental performance.

With a raft of innovative new products, talented new additions to our team, and an unwavering focus on quality, knowledge, and range, it's incredibly exciting to see where this year will take us. We are poised for growth and ready to continue leading the way in the drainage industry.

Thank you for your continued support

---

**TROY CREIGHTON**  
Managing Director, Stormtech



DO IT ONCE  
**DO IT RIGHT**



**Stormtech**



## ARCHITECTURAL Grates + Drains

- Award winning designs expertly crafted to elevate any space
- Available in a range of luxurious colours and finishes
- Sustainable with Greentag and Watermark certification
- Designed and manufactured in Australia for long lasting quality
- Experience hassle-free drainage like never before

Visit [stormtech.com.au](https://stormtech.com.au) or call **1300 653 403**



FP2024D001R

**SHOWERS + BATHROOMS + BALCONIES + COURTYARDS + POOL SURROUNDS + COMMERCIAL**

# Inclusive design reimaged: How lived experience shaped Logan Housing Hub

When Lady Musgrave, the wife of one of the first Queensland governors, established her Trust in 1885, she envisioned a society where vulnerable young women and children would find shelter and a pathway to self-sufficiency and empowerment. Almost 140 years later, the Haven House project in Logan, Queensland, embodies that vision. Spearheaded by the Lady Musgrave Trust, the Logan housing development is set to provide a safe, nurturing haven for vulnerable young mothers and their children escaping domestic and family violence.

“Domestic and family violence is the major reason why the young women we work with are experiencing or at risk of homelessness,” Victoria Parker, the Trust’s CEO, emphasises. “It’s a huge issue here in Queensland and across Australia, and it demands a substantial cultural shift.”

Victoria adds that women facing violence are often confronted with an impossible choice: stay in a dangerous situation or risk homelessness. That’s why

providing accommodation is one of the Trust’s fundamental goals. “We offer transitional housing where women under 30 can truly make a home,” she explains. “To foster a sense of autonomy, residents are provided with a lease in their name. The Trust subsidises the rent, as we believe it’s crucial for women to develop a solid understanding of living costs. As their circumstances improve, the rent increases but never exceeds 75% of the market rate. The aim is to facilitate their transition into stable, long-term housing.”

## **A two-generation solution**

The Trust owns 11 properties, providing around 8,000 nights of safety annually. While these numbers help make a difference, more is needed – and the Logan Housing Hub is a direct response to this urgent crisis.

“The housing development will provide up to 4,000 nights of safe accommodation,” Victoria enthuses. “It will offer a place to live and a holistic environment where young mothers between 18 and 24 can rebuild their lives and create a brighter future for themselves and their kids.”

## **A collaborative endeavour**

A multi-faceted team of partners and collaborators is central to bringing this multi-generational solution to life. A land donation from a developer, the support of the Queensland Government via the Housing Investment Fund, the expertise of Blight Rayner Architects, McNab’s construction prowess, the financial backing of the Property Industry Foundation and product donations from partners like Stormtech have all converged to make this joint vision a reality.

Located on a corner, near a bus stop, park, and schools, the donated plot covers all the criteria that are important to the residents, and the Property Industry Foundation not only assembled a team of architects, project managers, and other professionals but also contributed financially towards the construction costs. McNab, too, was happy to build the property at cost. “This is phenomenal, given the housing climate,” Victoria shares. “It’s a testament to everyone’s generosity.”

### **Inclusive design that empowers**

The architectural vision for Haven House is both captivating and deeply sensitive to its residents' needs. The design aims to create a haven that offers an empowering sense of space. Like a tree canopy, large roof overhangs provide ample shade, fostering a sense of protection where residents can heal and thrive. "The architects paid incredible attention to detail, believing that a beautiful place to live makes a huge difference to someone's sense of self," Victoria says.

What makes this project particularly unique is the fact that young mums who have experienced violence and homelessness actively contributed to the design of the Hub. "It was truly transformational for everyone involved," Victoria admits. "The mums felt heard and empowered, and the architects gained a deeper understanding of the purpose of their work."

Their insights have shaped vital design features, such as the integration of ample storage, a crucial consideration for young families. Apart from four self-contained units, three with two bedrooms and one with three, the home will feature a shared internal and external common space for mums and little ones to connect and an on-site office where a support agency can deliver assistance.

The home will also boast a dedicated pram parking area

under the stairs, a calming colour palette to ensure the residents feel safe and comfortable, and a pronounced focus on accessibility. One of the units is even fully accessible for people with disabilities, exceeding standard development requirements.

Stormtech's contribution is integral to realising this vision of an inclusive and empowering space. Their donation of two 100 AATDIS Wave Grate threshold drains facilitates a seamless transition between indoor and outdoor areas, enhancing the sense of openness and flow within the home. This thoughtful detail not only improves accessibility for residents with mobility challenges but also prioritises the safety of young children. Moreover, the drains' sleek, modern design aligns with the project's emphasis on aesthetics. By integrating beauty and functionality, Stormtech is helping to create an environment that is both welcoming and empowering, fostering a sense of dignity and well-being for the residents of Logan Hub.

In addition, Stormtech's commitment to sustainability, including the use of sustainably sourced materials and manufacturing powered by renewable energy, aligns perfectly with the project's ethos of creating a healthy and resilient community.

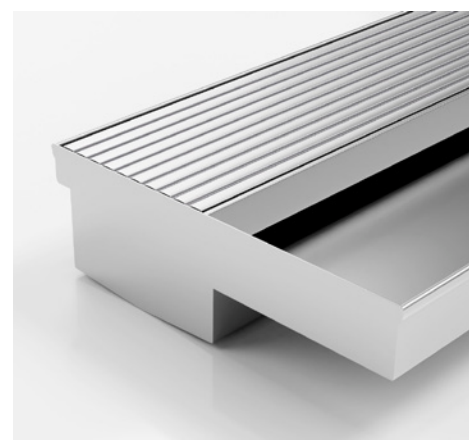
### **Lead by example**

"We're excited to demonstrate what can be achieved when multiple parties come together," Victoria says. The project is on

track to open its doors in early 2025, and everyone has been working incredibly hard because they appreciate the meaningful and urgent nature of the project. "Even the tradies on site have shared how much they're enjoying being part of something so meaningful," she adds. "This positive, generous energy will be imbued within the house itself."

This extraordinary undertaking is more than just a housing project - it symbolises what's possible when communities come together to address social challenges with compassion, passion, and creativity. It's a call to action for architects, designers, and industry partners to use their skills to create a more equitable and inclusive society.

"The need for housing for young women and children is immense," Victoria emphasises. "And we invite anyone who wants to be part of the solution to get in touch so we can replicate this project in other communities across Queensland."



# Sirius transformed: Brutalist past meets sustainable future

**D**esigned by Tao Gofers in the late 1970s as a social housing project, Sydney's much-loved Sirius building is one of few surviving examples of Brutalist architecture in Australia. With its bold geometry of concrete volumes overlooking the Rocks and Sydney Harbour, this iconic monolith has become a quintessential part of the city's architectural identity.

And now, this beloved edifice has undergone a remarkable revitalisation that respectfully honours its past, while enthusiastically gazing towards the future. Saved from demolition by developer JDH Capital and BVN Architecture, this undeniable architectural icon has been reimagined into a vibrant hub of contemporary design and modern living. The architects' respectful vision breathes new life into a historically significant structure while celebrating its distinctive character and rich, storied past.

This commitment to honouring the building's original design while enhancing its timeless character continues all throughout Sirius' interiors. The refined palette of concrete, copper, timber and marble plays up the gentle juxtaposition

between the raw and the polished, setting a refined and timeless stage for comfortable contemporary living.

This highly considered design is beautifully executed in the bathrooms where the harmonious blend of heritage and progress really shines through. Here, the Brutalist icon's unconventional layout demanded tailored drainage solutions and Stormtech's high-quality products and customisation capabilities played a crucial role in addressing the unique challenges posed by this high-profile retrofit.

And just like there is nothing standard about Sirius, there was nothing standard about the specified drainage solution. Stormtech provided a range of products for different applications and manufactured custom finishes and sizes - a custom width Architectural (AR) stainless steel grate and channel were selected for the bathrooms, with a different grate size fabricated for the penthouse ensuites, and a custom tile insert drain specified for one of the pools.

"As Sirius was a re-use and not a typical tower-like build with risers/stacks and typical levels, the 230mm wide custom strip drain allowed for the floor waste of the

bathroom in varying locations to be included into the designated strip drain zone," says Nicholas Graham, Project Engineer at Richard Crookes Constructions, who expertly brought BVN's magnificent vision to life. He adds that the drains, ranging from 1200 mm to 3000 mm in length, included L-shapes, multiple shower screen supports, and weep holes.

"We also opted for an integrated shower screen support on the strip drain," Graham explains. "This eliminated the need for a step in the bathroom floor and minimised the need for additional core holes, ultimately allowing for a single floor waste per bathroom."

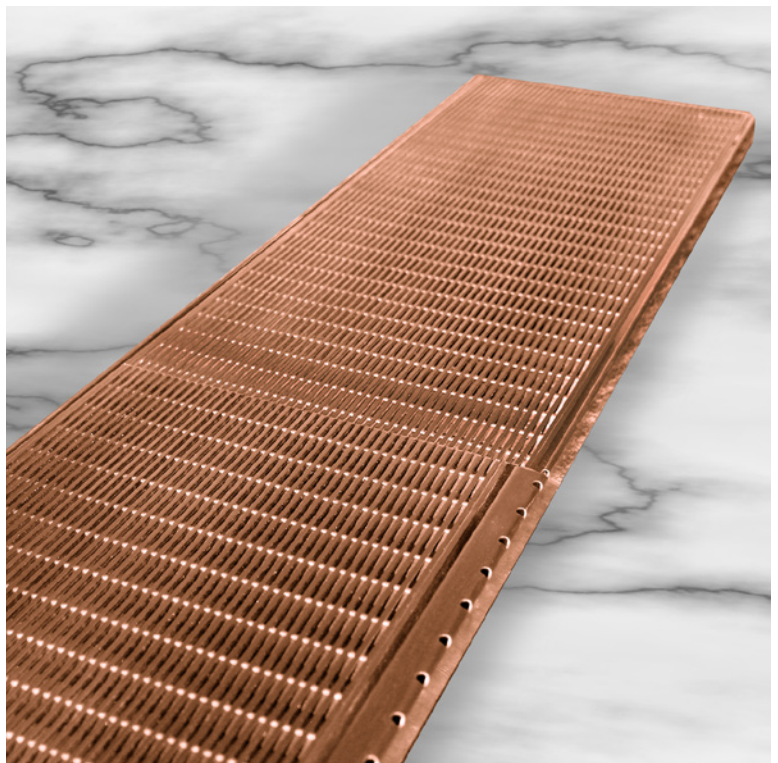
And while the PVD finished drains were specified predominantly for their high corrosion resistance and durability, Stormtech's customisation capabilities elevated them from high-performing products to creative design tools that aptly underscored the building's overall scheme. They were fabricated in a stunning bronze finish - the perfect colour match for Sirius' signature copper-led palette - while the drain integrated into the pool in a sophisticated shade of black

accentuated the refined nature of this communal area.

The resulting spaces reflect the magnificent duality of Sydney's reimagined architectural icon. They respectfully honour the building's rich design heritage while embracing the potential of innovative design solutions to offer this much-loved building a new lease on life – and Stormtech drainage solutions' part in that transformation is undeniable.

“With its durable finish, the strip drain is a high-quality finished product that will last the lifetime of the building. And in spite of being oversized, it looks intentional and sleek in the bathrooms,” says Graham. “The integrated shower screen support is a smart design solution that addresses the challenge of a single floor waste. It was essential in making the existing building work successfully with a single floor waste.”

As Sirius rises, transformed by this collaborative revitalisation project, Stormtech's contributions emerge as integral to the retrofit's success, demonstrating the company's unwavering capability to deliver tailored drainage solutions for even the most complex – and most iconic – architectural undertakings.







# The custom drainage revolution: Meeting the challenges of modern commercial design and construction

**T**he custom drainage revolution: Meeting the challenges of modern commercial design and construction

In complex spaces, such as those with unique layouts, particular aesthetic requirements, or difficult environmental conditions, standard drainage solutions may not always be effective. This is where customised drainage solutions come into play, providing individualised solutions to challenging drainage problems that are beyond the scope of standard “off-the-shelf” products.

The custom drainage revolution: Meeting the challenges of modern commercial design and construction examines how custom drainage systems can meet the challenges faced by

today’s building projects. Custom-designed drainage solutions excel in complex spaces because they are made from the ground up to satisfy the unique requirements of a project, guaranteeing a drainage system that precisely satisfies the space’s functional and aesthetic requirements.

Stormtech™ offers a tailored site-specific service to suit the complex needs of large and intricate projects, including a free site measure and quote. Linear drainage systems can be customised to suit unique design challenges, including dimensions, load, capacity, slip resistance and grate colour finishes, to give specifiers, trades and end users complete confidence that the products they are using are fit-for-purpose, and built for the required application.

*Download this whitepaper to learn how custom drainage systems are uniquely capable of meeting the challenges faced by today’s building projects.*

## KEEP READING

[bit.ly/GrateInsights\\_2024\\_WP1](https://bit.ly/GrateInsights_2024_WP1)



# Balcony drainage systems in multi-residential design: Common challenges, solutions and the impact of NCC 2025

Balconies in multi-residential buildings are popular for enhancing indoor-outdoor living but require effective drainage systems. Poor drainage can lead to water buildup, causing structural damage and long-term degradation of the building. As multi-residential developments continue to expand across Australia, the complexity of balcony designs has grown. Proper drainage design is essential to prevent defects and ensure the durability of new construction.

Balcony Drainage Systems in Multi-Residential Design: Common challenges, solutions and the impact of NCC 2025 looks at the reasons why

balconies leak and the drainage solutions that will prevent water accumulating and entering the indoor environment. We also consider the upcoming changes related to water shedding and waterproofing in the 2025 update of the National Construction Code (NCC).

Stormtech, a proudly Australian-owned company, has been at the forefront of drainage innovation for over 35 years. As the original inventors of the permanent formwork slot drain, linear drainage for bathroom applications, and threshold drainage, Stormtech has consistently pushed the boundaries of what's possible in the industry.

*Download this whitepaper to learn why balconies leak and the drainage solutions that will prevent water accumulating and entering the indoor environment.*



## KEEP READING

[bit.ly/GrateInsights\\_2024\\_WP2](https://bit.ly/GrateInsights_2024_WP2)







## Where absence creates presence: James Stockwell's architecture of connection

Despite its robust, concrete geometry, the Bunker House is particularly difficult to spot. The approach is dominated by the lush greenery and sweeping ocean views unfolding beyond the cliff's edge, and only upon closer inspection, glimpses of an architectural structure peek through vegetation that frames the vistas. The unpretentious volumes of a spectacular dwelling emerge from within rocky terrain so seamlessly it's impossible to pinpoint the exact border between the human-made dwelling and the ancient land it respectfully sits upon. Perhaps because there simply isn't one.

"The house on arrival presents you with no house, just a landscape view of the headland and ocean to orient yourself, bookended by pieces of the house covered in vegetation," explains James Stockwell, the renowned architect behind this highly coveted design. "It is intentionally saying this is what's wonderful and important - not the house."

The Sydney-based architect explains that, in his practice, he places enormous value on the landscape, the context and the natural systems, allowing them to shape the work directly. Stockwell's designs - like the captivating Croft House - wonderfully embody this interactive approach. Its organic

volumes echo the undulating shapes of the surrounding hills as the dwelling's arched form, seemingly buried within the landscape, turns away from prevailing winds while offering uninterrupted views and a sense of connection to the land.

The appreciation of a place's intricacies stems from Stockwell's exceptional listening skills. While designing Croft House, the architect spent a few days walking around the windy site, getting an intimate feel for the Inverloch region's weather patterns. "We spend time understanding natural forces at play, visible and invisible, listening to all the aspects of a location and people, coupled with

research into climate data, local, recycled materials, quarries and geology,” James explains. “We speak to natural systems and treat them as entities. We say, ‘We see you, wind, and this is our shape for this wonderful force of nature.’ The same is true for light, fire or storms. It’s fulfilling to consider these aspects as personalities we’re getting to know.”

James points out that as the world becomes increasingly homogenous, it’s vital to look for uniqueness in localised cultural qualities, history, practices and local materials to generate local outcomes tuned to the climate and people. “We must ask ourselves what exists and has developed here that makes this particular place unique,” he adds.

From the rugged geometry of Bunker House to the inverted roof of the Miura Fold House and the charming self-awareness of the Heritage Church Apartments in Melbourne, his projects tell intricate stories of the places they occupy and the people who inhabit them, and there is nothing generic about them. The buildings read as dynamic and meticulously localised, as if in a state of perpetual interaction with their holistic context.

This exchange is fostered by the open-ended nature of Stockwell’s work. “I aim to achieve a sense of incompleteness to be completed by the landscape, the occupants, and the furniture. This is achieved by making the enclosure of spaces seemingly incomplete by removing walls, thresholds and frames.” Indeed, the envelopes of Stockwell-designed dwellings are punctuated

by impactful moments of intentional omission and absence that leave the buildings open to interpretation by the inhabitants and the geographical context.

This notion of integration is reflected in the careful specification of materials and products that help bring James’ design intent to life. Essential to this approach is Stormtech’s range of drainage solutions, which the architect specifies for all his products. “We tend to work with a limited material palette, and room quality and transitions are enhanced by minimising framing and clutter at thresholds,” explains James. “Stormtech solutions assist significantly with achieving a seamless result.”

The drainage solutions – particularly Stormtech’s tile-insert drain products – reduce visual clutter at thresholds, helping minimise distractions that could detract from the dialogue between the dwelling, its setting, and its inhabitants. Apart from the clear appeal of the products’ minimal intrusion to the pared-back material palette he favours, James also emphasises their ability to assist in room design through minimal visibility of necessary functional items. “The linear shadow gaps and the articulation of built elements, which is well achieved with the Stormtech detailing, are also desirable,” he adds.

The simplicity and customisation of Stormtech’s products, which first attracted James to the brand, effectively support his architectural intent while offering exceptional versatility and adaptability.

Whether in Bunker House’s rugged coastal locale or the expansive New Zealand landscape Miura Fold House emerges from, Stormtech’s drains invariably enhance the designs in any geographical setting and climate.

Renowned for their enduring 316 marine-grade stainless steel construction, the drains also help augment the dwellings’ longevity – and their evolving relationship with the surrounding landscape. “As the works seek to be part of the landscape, the works are not complete without the context. And while perfectly fine without the building, the context can incorporate it better through adaptations,” he says. “The robustness of the design means the broader landscape can be very close without risk, so the occupants can achieve the desired closeness and invigorating connection to nature and the location they have come to love.”

Emerging organically from the landscape, the exquisite forms of James’ buildings are sculpted by the stories of wind, light, and the earth’s contours. Committed to an act of radical listening – to the land, the climate, and the human experience embedded within each place – the architect crafts spaces that uproot the concept of rigorous boundaries between the built and natural environments. Instead, his open-ended architecture fosters a rich dialogue between these two intimately intertwined realms, yielding a sense of ubiquitous connection that renders the notion of rigid frontiers and divisions somewhat superfluous.

# Small spaces, big impact:

## Redefining urban bathrooms with smart wet room design

While Australia's sprawling landscapes offer an alluring promise of space, the vast majority of Australians live in our metropolitan cities. According to the Australian Bureau of Statistics, since 1950, the majority of Australia's population has resided in capital cities, and only a few years ago, in 2021, a staggering 90.3% of the Australian population was, in fact, urban.

And while urbanisation offers undeniable benefits, it also poses challenges. The increasing population density in major cities strains resources and infrastructure, with both environmental and social ramifications. As cities become more densely populated, overcrowding can fuel unsustainable resource consumption, and increase the generation of emission, pollution and waste. In addition, urban infill and expansion can augment the degradation of fragile natural habitats, heighten the risk of bushfires and floods, diminish agricultural land and lead to deforestation. On the social front, overcrowding can manifest in a surge in health problems, declining quality of life – and an overburdened public service sector.

### Dawn of compact living

From a residential point of view, these shifts are also influencing the housing landscape. If the supply doesn't keep pace, the existing housing stock becomes more crowded. At the same time, new developments tend to prioritise maximising the number of units, often at the expense of their sizes. This is augmented by rising house prices and land costs which have rendered larger homes financially unattainable for a growing number of Australians, propelling smaller, more affordable dwellings into the spotlight.

Taking all of that into consideration, Australian cities have to interrogate their relationship with smaller residential spaces, employing comprehensive strategies including sustainable urban planning practices and innovative design solutions that maximise the liveability of compact urban dwellings.

### Embracing a new blueprint: The small revolution

To do that, a paradigm shift in residential design is essential. The traditional – now largely outdated – model of freestanding, single-family homes sprawling across large plots of land appears to be unsustainable in the context

of growing population density. Instead, cities have to embrace vertical expansion and explore innovative ways to maximise space within their existing boundaries, including higher-density housing that makes efficient use of land and resources.

### More room with the wet room

In bathroom design, incorporating a wet room is an example of this kind of transformative solution. Why? Bathrooms are often the most compact areas in residential dwellings. By eliminating conventional shower enclosures and seamlessly merging the shower area with the rest of the space, wet rooms create a sense of spatial expanse, which can make the interior feel much larger than it is.

This clever design approach, coupled with meticulous full-room waterproofing and strategically planned gradient falls for efficient drainage, not only maximises space but also enhances its minimalist aesthetic and functionality, proving that size doesn't negate comfort or style.

### Integrating Stormtech 120SCS: Bathroom design reimaged

Stormtech's innovative 120SCS shower screen support drain stands out as an excellent tool

when it comes to designing more efficient layouts to maximise the perception of space in smaller bathrooms.

By integrating shower screen support directly into the linear drain channel, Stormtech's signature drain system eliminates the need for a separate shower area and its associated floor waste. This, in turn, allows for a single water stop at the bathroom entrance, effectively transforming the entire bathroom into a Category 1 wet area. This innovative approach not only exceeds the minimum standard but also removes the need for a shower kerb, yielding a seamless, visually uninterrupted space – and contributing to creating a more efficient, optimised layout.

Stormtech's patented 120SCS system ensures continuous and effective drainage by incorporating a self-draining support for the shower screen and shower door. Waterproofing extends to a recessed waterproofing flange, allowing the membrane to continue uninterrupted beneath the channel, which further enhances the bathroom's waterproofing integrity. Plus, the drain offers a range of benefits that streamline construction and elevate spatial design possibilities. Not only does it have the potential to enable a single floor waste to efficiently drain the entire bathroom, depending on its size and layout – the drain's ability to channel water from both sides of the shower screen also provides optimal drainage, while the wall-to-wall installation capability helps eliminate complex falls and

intricate tile cutting.

These features are enhanced by the drain's minimalist structure. Its clean, refined form has been engineered to seamlessly harmonise with the bathroom surface, without hindering it with unnecessary design elements, thus ensuring easy cleaning. Plus, Stormtech's available selection of styles, profiles, dimensions, colours, and finishes – alongside their exceptional customisation capabilities and Made-to-Length units – ensures smooth integration as part of any interior design scheme or style.

In addition, the drain is Global GreenTag® certified and manufactured in Australia from marine-grade 316 stainless steel, guaranteeing superior environmental profile, durability and corrosion resistance.

Through a fusion of innovative features and versatile design options, the Stormtech 120SCS linear drain exemplifies the evolution of bathroom design, empowering architects, designers, and specifiers to create beautiful and functional bathrooms within smaller residential footprints. By merging cutting-edge technology with minimalist aesthetics and ecological considerations, the 120SCS drain not only elevates the quality of contemporary urban living but also helps provide a direct solution for the increasing demand for compact housing. In doing so, Stormtech's signature drain proves that small can, indeed, be beautiful and impactful in the face of the dynamic population shifts.



# Stormtech

[stormtech.com.au](http://stormtech.com.au)