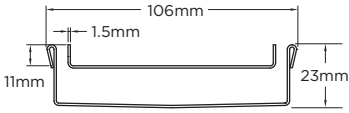


Order and Quote Form

Made-to-Length Tile Insert Drain › Multiple Outlet

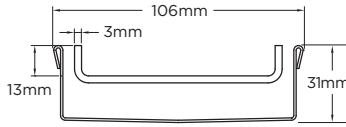


Tray Profiles 100 Range



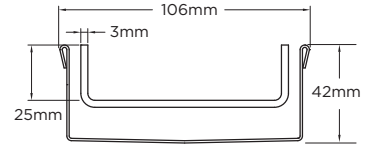
Profile 1

Suits tiles up to 10mm thick
100Tii20MTL



Profile 2

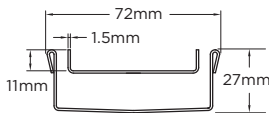
Suits tiles up to 12mm thick
100Tii30MTL



Profile 3

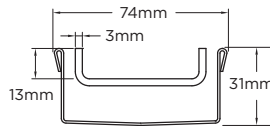
Suits tiles up to 25mm thick
100Tii40MTL

65 Range



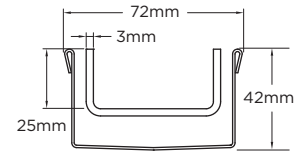
Profile 4

Suits tiles up to 10mm thick
65Tii25MTL



Profile 5

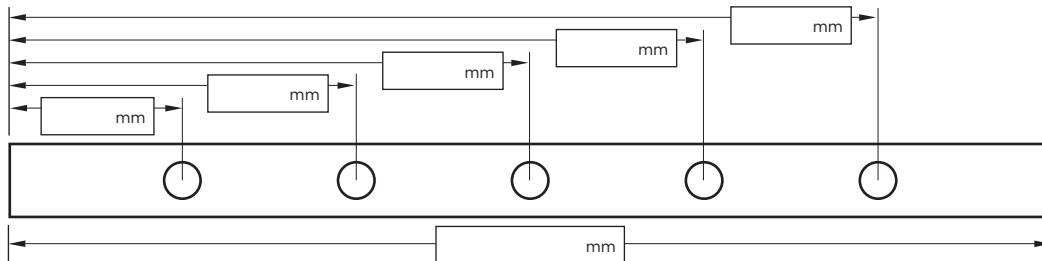
Suits tiles up to 12mm thick
65Tii30MTL



Profile 6

Suits tiles up to 25mm thick
65Tii40MTL

Specify Length, Outlet Positions/Size and Profile Required



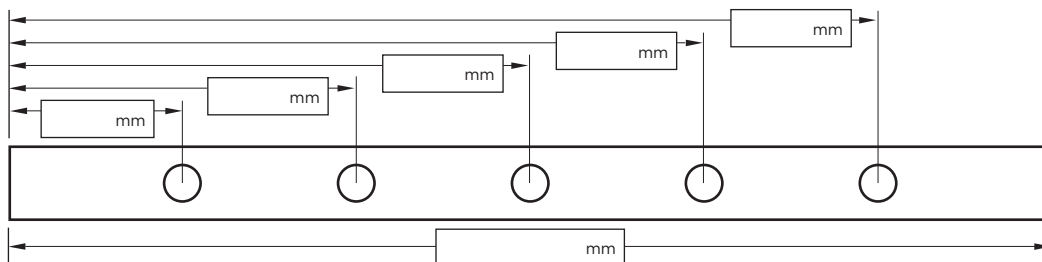
Drain 1

Profile Required

- 1 2 3 4

Outlet Size

- 38mm 44mm 51mm
 63mm 76mm 89mm



Drain 2

Profile Required

- 1 2 3 4

Outlet Size

- 38mm 44mm 51mm
 63mm 76mm 89mm

NOTE: See AS3500 standard & local regulator for specific outlet/drain requirements. Outlet Size must be smaller than selected Range. MND, PAS and PPS grate styles not available with Profiles 2 or 4. Stainless Steel Grade is 316 unless specified. Made-to-Length (MTL) minimum charge of 800mm. Tile Inserts longer than 1200mm supplied in multiple sections. Channels over 3000mm are supplied in multiple sections with joiner. Orders received after 11am are processed next working day. +/- 2mm tolerance on dimensions.

Full Name

Company Name

Telephone

Email Address

Order Number

Stormtech Quote Number

Signature