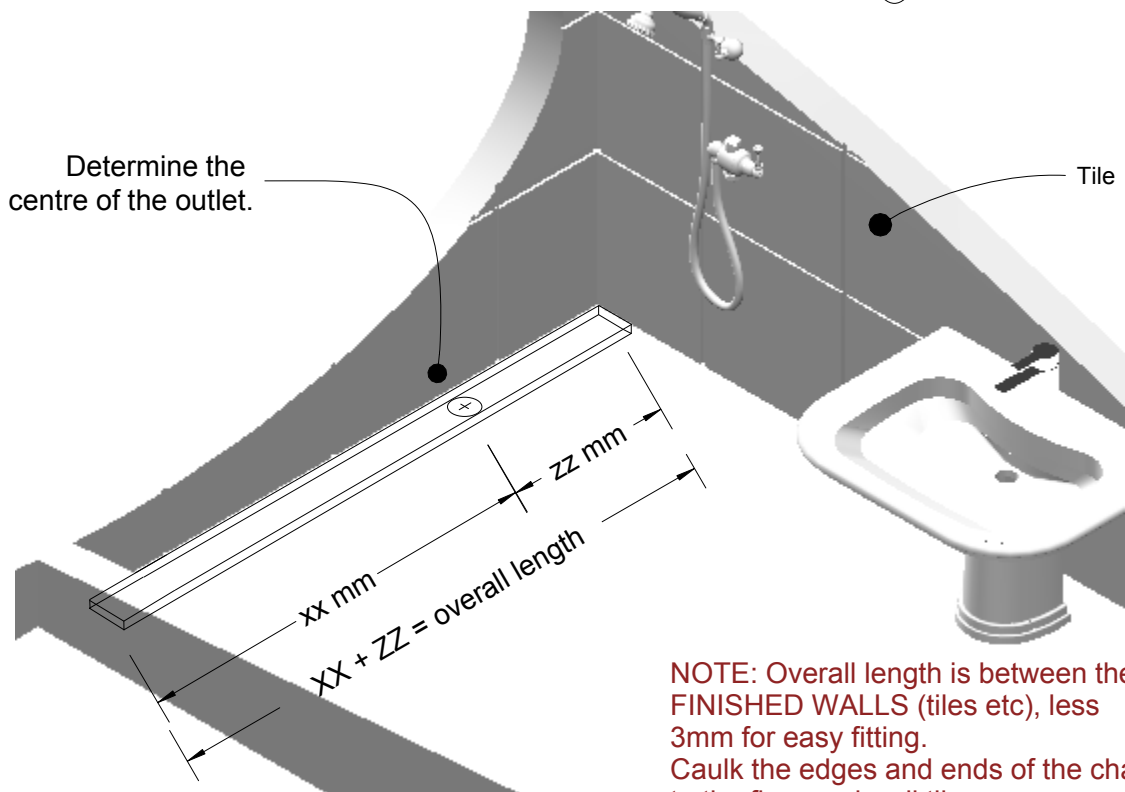
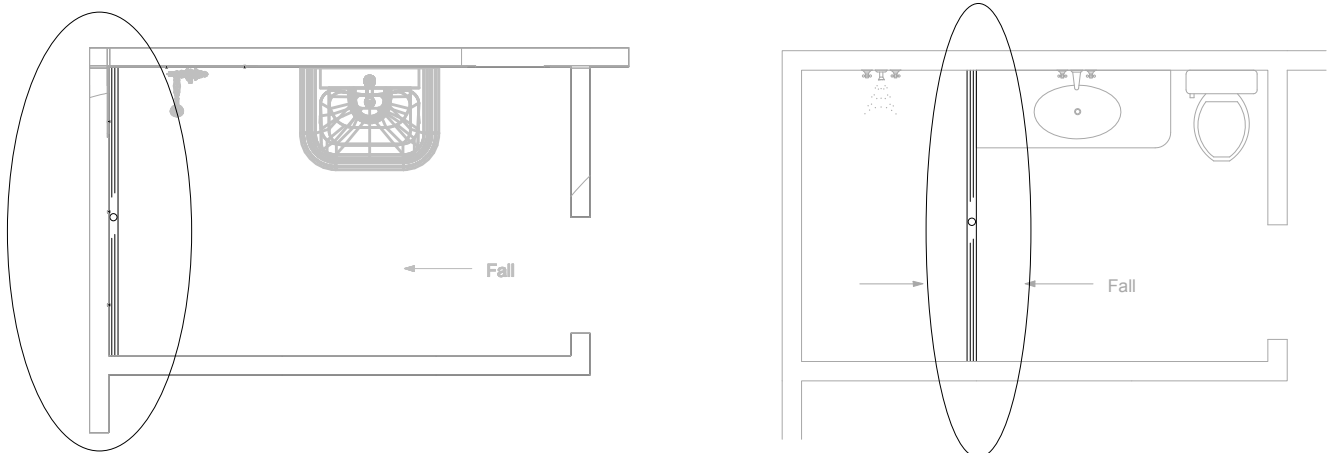


100i20 cutting to size.

For 100ARi20, 100MNDi20,
100PSi20, 100TRi20



NOTE: Overall length is between the FINISHED WALLS (tiles etc), less 3mm for easy fitting.
Caulk the edges and ends of the channel to the floor and wall tiles.

After determining the overall size less 3mm, measure both sides from the centre of the outlet to cut the channel to size.

Allow 10mm less than overall length for the E65i25 stop ends to be fitted.

Example,
Overall length is 1358mm (3mm less than actual tile to tile measurement).

The waste pipe is 790mm from one end, and 568mm for the opposite side.

The channel should be cut 785, and 563mm long (both less 5mm).

Once the E65i25 stop ends are on and sealed, the overall length will be 1358mm and the outlet will be in the correct position.