


Sustainability
Awards 

Sustainability eBook 2025

Stormtech



Our cities, as much as they are made of brick and mortar, are also constructs of our imagination. The way we arrange space—how a window opens to a street, how a roofline frames the sky—becomes an open and public argument about how we live now and in the future.

In recent decades, our awareness of our environmental precarity has pushed architecture into a role it has long resisted: that of an ecological partner.

This shift in perception is not simply a matter of better windows or greener materials, though these do matter; it is also about rhythm and restraint.

A building aligned with the seasons gathers daylight as if it were a harvest; one clad in stone quarried nearby will always speak of ‘place’ rather than one derived from global supply chains. The most successful designs feel less like monuments to human ingenuity than careful negotiations with earth, wind, water, and sun.

Energy, once a background concern, is now an architectural protagonist. Rooftops host panels that wallow in sunlight, while foundations hide pipes that draw warmth from the ground. Such technologies give buildings the ability not only to sustain themselves but to contribute back—surplus power returning to a grid once thought immutable. The grid, in turn, is learning flexibility, decentralisation, and resilience.

Water, an ever-precious resource in Australia, tells a similar story. Rain no longer rushes off rooftops into overwhelmed sewers; instead, it gathers in cisterns, trickles into green roofs, or is coaxed back into circulation through

greywater systems. Each drop is treated less as waste than a unit of value.

What emerges is a different picture of architecture: less the skyline heroism of the last century, more an ongoing dialogue with its environment.

To build sustainably is not to renounce style, vision, or ambition, but rather, to imagine a permanence that does not come at the planet’s expense.

BRANKO MILETIC, EDITOR

The Awards Jury



DICK CLARKE
*Founding Director,
Envirotecture Australia*



EMILY WOMBWELL
Director, SJB Australia



GEORGIOS ANAGNOSTOU
Director, FUSE Australia



HEATHER MCCABE
*Architect & Certified Passivhaus Designer,
DJRD Architects*



JEREMY SPENCER
Positive Footprints



MAHALATH HALPERIN
*Architect & Director,
Mahalath Halperin Architects*



SANDRA FURTADO
Director, Furtado Sullivan



SHAE PARKER MC CASHEN
*Founding Director,
Green Sheep Collective*



TONY EDYE
Tony Edye and Associates



SUSTAINABLY SOURCED, ETHICALLY MADE, INDEPENDENTLY CERTIFIED:

Australian-made drainage with Stormtech

For Stormtech, a market-leading architectural drainage solution provider, commitment to sustainable sourcing and manufacturing has been a foundational cornerstone since the company's inception in 1989. And since the very beginning, it's been invariably linked to Stormtech's signature "Australian-made" ethos. Why? For this family-owned business, the iconic green triangular symbol is synonymous with the essential notion of connection – to the land, the local culture and the community.

"Organisationally, we're united in our interests of advancing the Australian economy and looking after Australian interests," explains Troy Creighton, the progressive CEO at the helm of his father-founded company. "Plus, local production gives us access to a highly skilled Australian workforce."

But the outline of the yellow kangaroo jumping off the leafy-green background reveals an even deeper meaning. It's a badge of quality, innovation, and commitment to environmental

and ethical practices. "Manufacturing our products locally gives us full agency and control over any decisions related to our supply chain," Troy explains. "Ownership of our supply chain and local production allows us to be judicious about inputs and select suppliers that also follow ethical and sustainable practices. Plus, it enables us to retain complete control of our intellectual property, which incentivises continued product innovation for the benefit of our industry."

SUSTAINABLE MANUFACTURING: PROGRESS POWERED BY AUSSIE INGENUITY AND SUN

When it comes to local production, Stormtech's Nowra manufacturing plant embodies the quintessential qualities of a true-blue Aussie. Located on the South Coast of NSW, in a pretty iconic urban area embraced by Jervis Bay's sandy coastline, Shoalhaven River and the vast expanse of national parks and reserves, Stormtech's factory emerges from this familial locale propped by Australian ingenuity, which has powered the company since its humble beginnings.

Beyond this indispensable creative Aussie fuel, Stormtech relies on another Australian superpower: the generous energy of the sun. "Our manufacturing plant is powered entirely by renewable solar energy and operates independently from the national grid," Troy enthuses. The innovative solar energy system, complete with advanced batteries, inverters and a backup generator, enables Stormtech to cut off over 260 tonnes of carbon emissions annually.

In addition, the company has taken significant steps to eliminate single-use plastic from their packaging, making all their boxes and wraps completely recyclable. As signatories of the Australian PVC industry's voluntary Product Stewardship Program developed by the Vinyl Council of Australia in collaboration with the Department of the Environment and Heritage, Stormtech recycles all its offcuts and assists its customers in recycling their unused products. Plus, their uPVC products are not only 100% recyclable but are also produced with Best Environmental Practice materials, further reducing waste and the demand for virgin resources in their manufacturing process.

SUSTAINABLE SOURCING: LOCAL PARTNERSHIPS, GLOBAL RESPONSIBILITY

With such an unwavering commitment to sustainable manufacturing, it's no surprise that Stormtech prefers to partner with local suppliers who share these values. Troy explains that the

strategic localisation of their supply chain allows Stormtech to be flexible and adaptive to local conditions while keeping it slim and efficient means they can work with partners who are transparent about their own processes and environmental performance.

"Working collaboratively with other local suppliers who share our sustainability ambitions is essential to identifying new areas of improvement and keeping abreast of the latest developments in product solutions," he says. "And so, we work with suppliers who are independently accredited for environmental best practice by industry organisations, including the Vinyl Council of Australia and the Australian Stainless Steel Development Association."

However, Troy points out that sustainable sourcing doesn't always mean sourcing locally – it means recognising the multifaceted character of a sustainable supply chain, methodically investigating the options, and always selecting the best one. "Naturally, we aim to buy, source and support Australian materials and products whenever we can," he says. "At the same time, we always explore all available options to ensure we can offer the perfect balance of quality and sustainability to our architecture, design and construction clients."

SUSTAINABLE MATERIALS: PRIORITISING PERFORMANCE AND THE PLANET

Stormtech's 316 marine-grade stainless steel is an excellent example of this holistic take on sustainable sourcing. The material is sourced from Europe – from the lowest carbon emission mills in the world, Troy adds – and Stormtech freights it by sea, ensuring that the environmental impact of the cross-continental logistics is still lower than obtaining the same material locally. Stormtech's stainless steel is also manufactured using over 90% recycled content and is entirely recyclable – plus, its production process boasts a 75% lower carbon footprint compared to the global industry average. "It is the most sustainable product available," Troy ensures confidently.

Stormtech demonstrates the same thorough approach when sourcing other materials used in its manufacturing process. Their award-winning Wave Grate product is made with Capral Local Super Green aluminium, the

most sustainable extruded aluminium product available, which means it produces three times less carbon emissions than the global average for aluminium. In terms of PVC, on top of the Global Green Tag tick of approval, Stormtech's PVC also boasts the Vinyl Council's Best Environmental Practice (BEP) trademark, which is awarded to compliant products that can provide evidence of the independent assessment of compliance with their relevant guidelines. "We want to ensure it's produced using the world's best practice," Troy says.

SUSTAINABLE CERTIFICATIONS: PIONEERING THE WORLD OF INDEPENDENT VALIDATION

But these aren't the only certifications punctuating Stormtech's market-leading progress in the sustainability space. In fact, Stormtech was the first drainage manufacturer in the world to achieve Global Green Tag Level A Gold Certification across its entire product range. The Global Green Tag requires a rigorous independent assessment that considers all sustainability facets of the product, from health and ecotoxicity and LCA to corporate responsibility and compliance, which positions it as one of the most crucial sustainability certifications – both for the suppliers and the specifiers.

The company also offers certified EPDs across their highly coveted Slimline Stainless Steel and PVC Channel Linear Drainage ranges – yet another act of environmental transparency that didn't come without its challenges. "To achieve these certifications, we undergo a rigorous independent process examining all aspects of the product life cycle," Troy explains. "We've also achieved ISO 9001 Quality Management System certification, which involves a particularly stringent process analysing our operations from top to bottom. It demands commitment to the quality on every level."

This highly considered and, frankly, unapologetic environmental commitment makes it evident that, for Stormtech, sustainability is not a marketing tool – it's an ingrained philosophy directly informing the quality of their products and processes and actively shaping both Stormtech and drainage solutions' future.

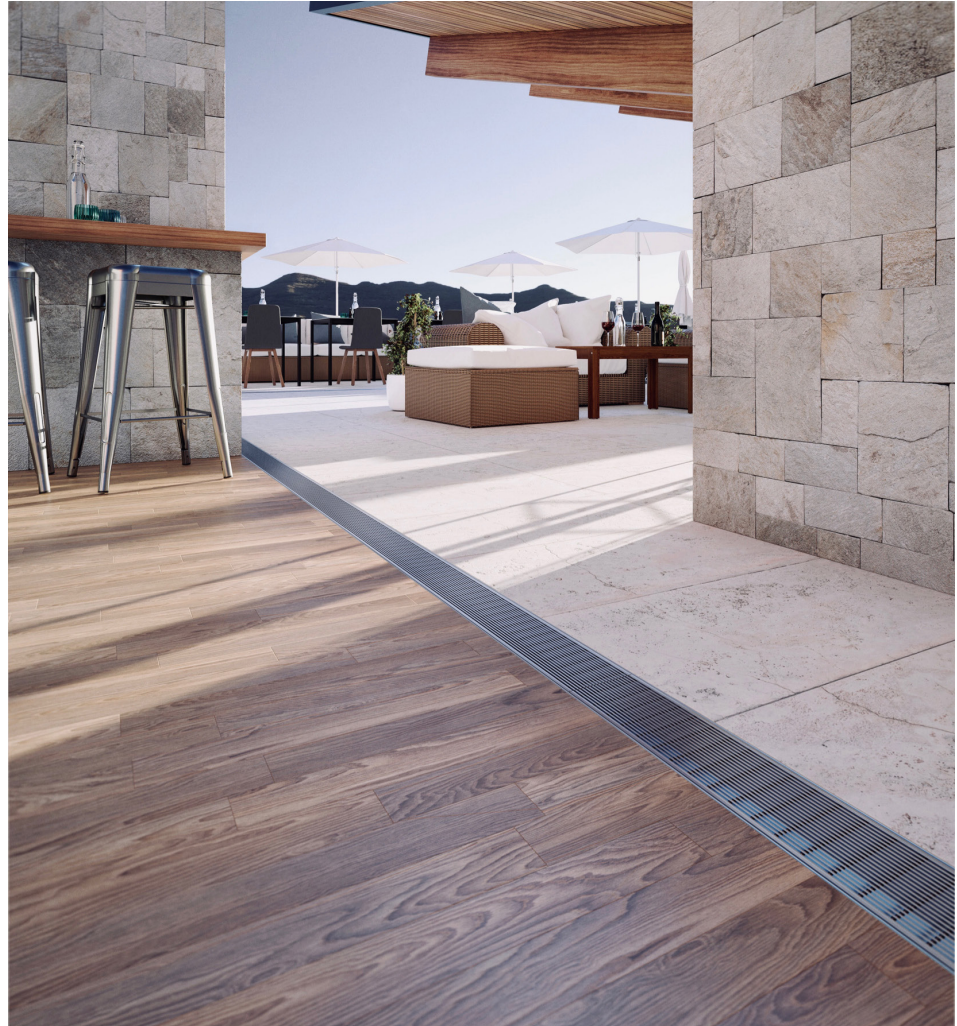
SUSTAINABLE SPECIFICATION: LOOKING AFTER AUSTRALIANS, THEIR ENVIRONMENT AND THEIR FUTURE

With an unwavering commitment to sustainable sourcing and manufacturing, and the iconic Aussie-made badge of ultimate quality, Stormtech’s outstanding range of products emerges as the unmatched design solution for architects, designers and specifiers who prioritise sustainability just as much as Troy and his team.

“By specifying our products, industry professionals are choosing high-quality, enduring, fit-for-purpose architectural solutions designed with long-term performance and reliability in mind,” Troy says. “They offer peace of mind when it comes to lower embodied carbon, can contribute to the development of Green Star buildings – and come with no ethical ambiguity of offshore manufacturing nor modern slavery.”

On a rudimentary level, ensuring Stormtech equips specifiers with brilliant products harkens back to Stormtech’s innate desire to look after Australians and their interests, environment, and future. But what will that look like? Bright, as long as Stormtech is involved. Looking ahead, Troy is envisioning a future where sustainable practices are not just an aspiration, but the standard across the building materials industry – and Stormtech’s own ingenious journey positions them as a leading driving force behind this imminent shift.

“We see a clear trend towards greater responsibility for suppliers to meet the sustainability demands of architects and designers – alongside clearer benefits for those who do – and ongoing regulatory changes pushing for environmental and ethical transparency,” he muses. “At Stormtech, we’re particularly excited about the development of energy and battery technologies, which could further enhance our operational efficiencies and advancements in sustainable transport to optimise our supply chain. By embracing innovation and staying true to our core values, we want to shape the trajectory of drainage solutions and actively contribute to a more resilient built environment to ensure a brighter, more sustainable future for all.”



Hospitality & Tourism Award Shortlist



proudly partnered by Stormtech

Examples of Hospitality & Tourism Design include projects that help create locally owned business and employment opportunities, environmentally friendly operations, education and awareness programs, energy and resource conservation, and waste & carbon dioxide reduction.



CROP FITZROY
OLAVER ARCHITECTURE



KAVILLO STUDIOS
CAMERON ANDERSON ARCHITECTS



THE SILOS ACCOMMODATION
COOEE ARCHITECTURE



WILLIAM INGLIS HOTEL SOLAR ENERGY
SMART SOLAR POWER

Award Winner

PROJECT PHOTOGRAPHY Matt Beaver



THE SILOS ACCOMMODATION COOEE ARCHITECTURE

A fifth-generation farmer dreamed of converting a 60-year-old grain silo into quality sustainable farm stay to diversify their farming business, share their lifestyle and region with the public, and create a legacy for their children. The result – The Silos Accommodation – is a bucket list experience.



ABOVE Troy Creighton (Stormtech) with Sarah Lebner (Cooee Architecture)





JOHN CREIGHTON:

The Aussie inventor who revolutionised drainage

In the dynamic realm of sustainable architecture, design and construction, we tend to look ahead, constantly evaluating the environmental impact of our choices and anticipating the future. However, while our collective gaze should certainly remain on the horizon, it's crucial to pause and acknowledge the trailblazers who paved the way for us. These are the individuals who refused to settle for mediocrity; the industry pioneers whose unwavering ingenuity and foresight laid the foundations for sustainable solutions as we see them today.

John Creighton, the visionary founder of Stormtech, is undoubtedly among these luminaries. A creative country boy with a deep love for invention, John's journey is a quintessential Australian tale – a story of ingenuity, resilience and a profound connection to the land – that ultimately redefined drainage solutions. We sit down with John's son, Troy Creighton, the current driving force at Stormtech, to reflect on John's inspiring story, explore his most consequential inventions and understand how his sustainable legacy permeates Stormtech's ethos until this day.

FROM RURAL ORIGINS TO INVENTIVE PURSUITS

John's story begins in the serene countryside of Casino, a rural town in northeastern NSW, where he cultivated a deep appreciation for the natural world and the unhurried rhythm of country life. As Troy fondly recalls, John possessed a "strong-willed, independent and creative" spirit – a unique blend of attributes that inevitably propelled him toward invention.

Despite the undeniable pull of his rural roots, the vibrant allure of opportunity brought John to Sydney, where he initially embarked on a pursuit of a rugby league career, only to later find unexpected success in the world of insurance. However, John's innate ingenuity proved too compelling. "His creative flair drove him into the rewarding hobby of invention," Troy reveals.

John's mind was constantly buzzing with ideas, many of which demonstrated a keen awareness of what we now understand to be the critical importance of sustainability. From refillable pressure packs designed to supersede disposable aerosols to explorations of hydrogen generation, these early endeavours showcased his ingenious, forward-thinking approach and clear, albeit indirect, commitment to a more sustainable future.

A CONCRETER'S BOLD VISION FOR BETTER DESIGN

This innate affinity for hands-on work prompted John to swap his corporate position for the demanding physical labour of a concreter. "A job well done became his core ethos," Troy describes,

highlighting his father's exceptional work ethic, meticulous craftsmanship and commitment to excellence.

These traits quickly established his reputation for outstanding quality, making him a sought-after expert for prestigious architectural projects. And it was within the dynamic context of the bustling construction site that John identified a significant market gap – effective and aesthetically pleasing drainage grating.

"Dad's acute attention to detail and unrelenting pursuit of true refinement and lasting quality left him deeply dissatisfied with the limited options for available gratings, which would have been basic cast iron, hot dipped ladder grates, cast aluminium or domestic-style plastic grates," Troy recalls his father's refusal to settle for mediocrity. "Given the focus on the high-quality finish of the slabs by the architects and engineers he was working for, he was convinced there had to be a better way."

THE SLOT DRAIN IS BORN

Inspired by an Austrian publication focused on the innovative applications of precast concrete, John invented an ingenious and elegantly simple solution: his first drainage product, the now-iconic Slot Drain.

This wasn't just a variation on existing drains – John's solution represented a radical departure from the constraints of conventional drainage design. Rejecting the traditional channel intended for a separate grate, the new design harnessed the inherent structural integrity and load-bearing capacity of the surrounding concrete itself, yielding a sleek slot resembling a simple expansion joint, that far transcended the utilitarian appearance of traditional products.

And while John's immediate focus may not have been singularly centred on environmental sustainability, the Slot Drain's innate sophistication and functional minimalism embodied many of its core principles. "By significantly reducing the amount of required material compared to traditional systems that relied on separate grates and channels, this refined design exemplified the core sustainability tenant of maximising efficacy and performance, while minimising the consumption of resources," Troy explains.

PIONEERING A SUSTAINABLE ETHOS

Predating the widespread adoption of sustainability as a guiding principle for responsible manufacturing, this notion of resourcefulness was at the core of John's remarkably future-forward vision for Stormtech when he started the company in 1989. The pragmatic imperative to "do more with less," Troy says, had been carefully cultivated by the practical realities of John's rural upbringing and – coupled with his innate sense of frugality and fiercely independent character – this philosophy shaped John's uniquely efficient approach to problem-solving.

"This ethos led Dad to find ways to utilise components for the drain that were reusable, including the packaging," Troy reflects. So, in an era when potential reuse of construction waste was frequently overlooked, John saw it as a valuable resource that could be repurposed. "Much of the early Stormtech material sourcing was from construction waste," Troy says.

He adds that John's deep connection to the land also meant he never even considered moving manufacturing out of the country. "This Australian-made ethos is John's DNA. He would only source local materials which, inherently, supported sustainable outcomes by reducing energy used in transport."

Embracing ingenuity in the face of adversity – These formative years were defined by John's highly practical and creative approach; however, Troy points out, the company's trajectory wasn't without its difficulties. "His initial and most pressing challenges in those early years centred around the critical need to maintain consistent product quality and to establish efficient and scalable manufacturing processes," Troy recalls. "Not having sufficient capital to employ a qualified engineer, he was repeatedly compelled to rely on his own ingenuity to overcome these technical hurdles."

John faced these challenges head-on, meticulously devising innovative – often unconventional – testing protocols, including the implementation of empirical testing to ascertain the hydraulic capacity and performance characteristics of the groundbreaking Slot Drain. These resourceful efforts perfectly encapsulate the quintessential Australian ethos of pragmatic

problem-solving and a “can-do” attitude in the face of adversity – one of the most inspirational aspects of John’s long-standing legacy.

LASTING HERITAGE OF INNOVATION AND SUSTAINABILITY

John’s enduring legacy transcends the tangible realm of his groundbreaking products, profoundly permeating Stormtech’s ethos, its values and ongoing operations. And, perhaps more than anything else, it’s John’s remarkable ability to recognise the often-overlooked needs of the industry and articulate those insights into simple and functionally brilliant solutions, that remains the company’s most pertinent guiding principle.

“The essence of truly listening to what people want, to genuinely understand their needs and challenges, is a skill that, while seemingly obvious, isn’t as commonly or effectively employed as one might expect,” Troy says. “John possessed this rare and valuable ability to truly hear the intent of what people desired, and then, with his characteristic creativity and problem-solving acumen, he was able to simplify a complex problem and craft an elegant solution, achieving an outcome that often seemed so intuitively obvious that people would invariably wonder aloud, ‘Why hasn’t it been done this way before?’”

John’s unique curiosity and steadfast commitment to exceptional quality, durability, functionality and refined aesthetic continue to define Stormtech’s approach to both design and manufacturing. “Dad instilled in us this deeply-held conviction that products should never be conceived as merely ‘good enough’ to meet a minimum standard,” Troy says. “Rather, they should be meticulously engineered to endure the test of time, a powerful principle that resonates with contemporary sustainability imperatives.”

Troy adds that it was John’s invaluable first-hand immersion in the practical realities of a construction site that informed his design decisions, motivating him to shape his products to streamline the construction process and enhance overall efficiency. “Dad gave to the world the idea that stormwater drainage does not have to look industrial,” Troy says. “It can be discrete, durable, highly functional and easy to install. Today, each of our products honours that belief.”

RECONTEXTUALISING THE LEGACY FOR THE MODERN REALITIES

Today, under Troy’s stewardship, Stormtech continues to uphold and amplify John’s pioneering spirit. Troy has wholeheartedly embraced his father’s enduring legacy, propelling the company forward with a reinvigorated emphasis on sustainable product innovation, thoughtful optimisation of the manufacturing processes and responsible sourcing practices. “I am in the fortunate position to exercise careful discretion in the selection of our supply sources,” he explains with a palpable sense of purpose. “Ensuring that they scrupulously reinforce our overarching commitment to sustainability.”

Reflecting this commitment, Stormtech only uses Outokumpu certified and verified lowest-carbon, 316-grade stainless steel and Capral’s Super LocAL Green Aluminium – one of the lowest-embodied-carbon extruded aluminium products in the world – while the incorporation of Best Environmental Practice (BEP) PVC further underscores the organisation’s holistic approach to sustainable material selection.

Plus, Stormtech’s NSW state-of-the-art manufacturing facility reinforces the company’s sustainable objectives. The site operates almost entirely on renewable solar and battery energy, and features convenient on-site EV charging infrastructure, promoting the adoption of electric vehicles and further reducing carbon emissions. Rightfully, these endeavours have garnered well-deserved recognition and independent validation through rigorous audits and certifications from Global GreenTag and the Vinyl Council of Australia, solidifying Stormtech’s position as a leader in sustainable practices.

“We’re aiming for a future that our kids can inherit without dealing with a legacy of neglect, ignorance and greed,” Troy states, and it’s clear that Stormtech’s modern leader is genuinely galvanised by a compelling vision of perpetual innovation and a desire to expand the frontiers of sustainable design. “We have several new products under development,” he reveals. “Each has its own sustainability story, but they are all unique and will undoubtedly ‘move the bar’.”

Alongside advancements in product innovation, Stormtech is also implementing further enhancements to its manufacturing

facility to augment efficiency, expand production capacity, maintain exceptional product quality and accelerate production velocity. “Collectively, these improvements contribute to the establishment of a more ecologically responsible, economically viable and fundamentally sustainable operational system,” Troy adds.

However, this idea of collective impact transcends Stormtech’s operations, extending to the broader community of Australian industry professionals who share the same unwavering commitment to sustainability.

“In today’s increasingly complex and often misleading marketplace, it is more critical than ever to exercise caution and diligence to conscientiously avoid the pervasive practice of greenwashing, where companies may make unsubstantiated or exaggerated claims about their environmental credentials,” he says, reinforcing the fact that architects and designers should seek independent verification. “If they genuinely aspire to partner with truly innovative, sustainable businesses, they must prioritise a careful assessment of a company’s underlying passion, its genuine focus and its proven expertise in a specialised area – such as our unwavering dedication to the advancement of linear drainage solutions.” And the easiest way to investigate is to check if any green claims are independently certified or at least verifiable openly.

THE TRANSFORMATIONAL POWER OF INTRINSIC TIES

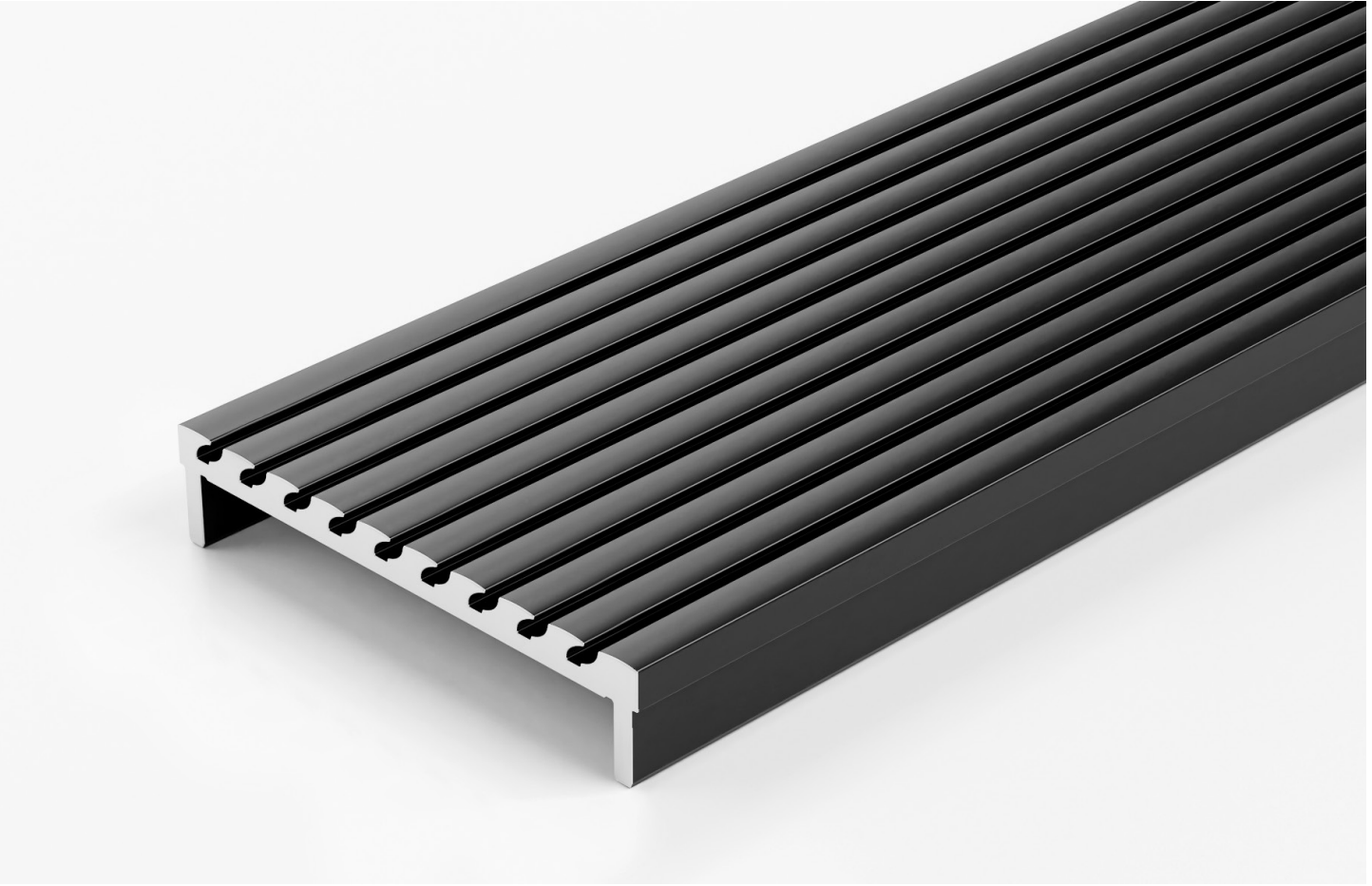
Fuelled by a combination of boundless creativity, unwavering determination and a profound affinity for the resilience of the Australian landscape, John’s remarkable heritage has laid the fundamental cornerstone for a market-leading company that continues to reinvent the very parameters of effective, beautiful and sustainable drainage. And as Stormtech confidently advances into the future under Troy’s dynamic leadership, the company’s singular story – a tale of powerful family ties and shared ingenuity – emerges as a compelling reminder that the transformative potential of innovation and sustainability, much like those familial connections, comes from their intrinsic interconnectedness.

GOOD DESIGN, GRATE SOLUTION, GREATER GOOD:

Stormtech's best innovation to date

Wave Grate, Stormtech's signature drainage solution, needs little to no introduction. Its patented wave-like design that can seamlessly disappear into any internal or external architectural landscape was recognised as the Good Design Awards Winner in the Hardware and Building Product category in 2023. The description on the award page states that "the Wave Grate has taken all the negatives of bathroom drains, resolved them, and combined all the positives of linear drains into one single unique high-end aesthetic" – all while maintaining an attainable and inclusive price point. This succinct sentence aptly encapsulates the ingenious nature of this industry-defining innovation, acknowledging it as a pioneering solution to a longstanding design challenge. But there is much more to this delightfully inconspicuous design. The slim, deliberately unobtrusive profile conceals more than the drainage channel, dirt and debris – the refined grate reveals a particularly robust sustainability profile. One anchored by outstanding functionality, stunning aesthetic and Stormtech's unwavering commitment to quality.





“Quality is central to each Stormtech product,” Troy Creighton, Stormtech’s visionary CEO, explains. “And in the design process no stone is left unturned to ensure visually appealing products are fit for purpose, made to last and exceed compliance requirements.” This design philosophy is beautifully realised in the Wave Grate. Watermark-certified and meticulously engineered to surpass requirements of both the NCC and Australian Standards, this innovative solution balances high-performance drainage, outstanding durability, versatile application and genuine sustainability.

The Wave Grate can be supplied as a modular kit that is cut down to size on-site, in fixed lengths with a centre outlet or made to length, resulting in a highly customisable system that efficiently handles high-flow drainage in any indoor and outdoor scenario. This innate flexibility is augmented by the design’s timeless expression. Defined by its distinctly narrow aperture grating, the Wave Grate’s clean, minimalist aesthetic effortlessly complements any design vision, a versatility enhanced by a contemporary palette of tactile finishes. “Texture and sensory experience are central to the design,” Troy emphasises. “It was essential for us that the grate feels soft underfoot, and the subtle surface undulations create that genuine soft-touch feel – a detail that elevates the user experience.”

But the compelling appeal of the grate’s materiality goes deeper than its tactile surface. “Wave Grate is made with Capral’s LoCAL Super Green aluminium which is produced at ASI-certified smelters with a carbon footprint of just 4 kg CO₂e/kg of aluminium,” Troy explains. “That’s around three times lower than the global average, which makes it one of the lowest-embodied-carbon extruded aluminium products in the world.”

The environmental diligence underpinning the selection of ASI-certified low-carbon aluminium is echoed by Stormtech’s overarching approach to materiality. The Wave Grate is engineered to integrate seamlessly with Stormtech’s

Outokumpu certified and verified lowest-carbon, 316-grade stainless steel, while the uPVC used in the drainage channels is certified Best Environmental Practice by the Vinyl Council of Australia. “Plus, both our stainless steel and u/PVC/stainless slimline drainage systems are also Global GreenTag EPD and LCARate Gold certified,” Troy adds. In addition, as a signatory to the Vinyl Council’s PVC Stewardship programme, Stormtech makes a commitment to assist customers with the recycling of used materials at the end of their lifecycle.

This intricate approach to materiality epitomises Stormtech’s uncompromising vision of what sustainable product design is – and isn’t. As Troy points out, it isn’t necessarily about looking at ways to incorporate “green” features. “Rather, it’s about ensuring sustainable practices and continuous improvement are embedded across all business systems and processes,” he adds, once again gesturing to Wave Grate as a perfect embodiment of this notion. “The development process involved creating custom tooling and processes which significantly increased production efficiency, while reducing environmental impact,” Troy explains. “For instance, early on, we changed the way the underside of the grate was carved out. This meant transitioning to a new pattern, which ended up reducing production time of this particular element from 1 hour and 20 minutes to just 12 minutes.”

This example underscores the company’s impressive efforts to enhance all facets of their business in the bid to prioritise both energy and embodied carbon reduction. Stormtech’s state-of-the-art manufacturing hub in NSW’s South Coast, which is run using 100% renewable energy, illustrates this affinity for ongoing betterment – a commitment Stormtech sealed with the achievement of ISO9001 certification.

Considering this robust sustainability agenda, unwavering commitment to quality and the innovative ethos that has been powering

Stormtech’s pioneering product launches since John Creighton revolutionised the industry with the Slot Drain, the Wave Grate couldn’t have been created by anyone else. It had to be Stormtech.

And while the product’s outstanding fusion of performance, durability, versatility and sustainability – all packaged up in a particularly neat-looking design – might still be hard to believe, Stormtech’s affinity for transparency and independent verification make it clear that Wave Grate’s outstanding design is a well-documented fact, not a matter of faith. And to say that specifying Wave Grate is peace-of-mind guaranteed, seems like a serious understatement.

“It’s an assurance that you’re working with a manufacturer who is clear and transparent around their commitment to sustainability,” Troy smiles. “And who’s committed to local manufacturing and believes that sustainability is much more than a singular product feature – it’s something that’s imbued in the entire supply chain.”

With its award-winning, pioneering design that has set a new industry standard, Wave Grate might seem like the pinnacle of drainage design – and a culmination of Stormtech’s decades-long trailblazing efforts. Yet, as Troy points out, for Stormtech, innovation is an ongoing journey.

“Wave Grate is a continuation of Stormtech’s 35-year history of drainage innovation,” he says. “And so, we keep exploring new ways to meet the needs of the architecture and design industry, while sourcing the latest in materials and technologies to support our sustainability goals.” And that, he adds, comes from a profound act of active listening – a particularly unique quality he picked up from his dad. “The direction of our product development has always involved paying close attention to our customers and understanding the challenges they struggle with,” Troy says. “Finding new solutions to these issues has always guided – and will continue to underpin – our design process.”

